



Real World Scenarios

27th California Unified Program
Annual Training Conference
March 24-27, 2025







EMERGENCY VENT-PRIMARY

WORKING VENT PRIMARY



EMERGENCY VENT SECONDARY

**SECONDARY CONTAINMENT
DO NOT FILL**





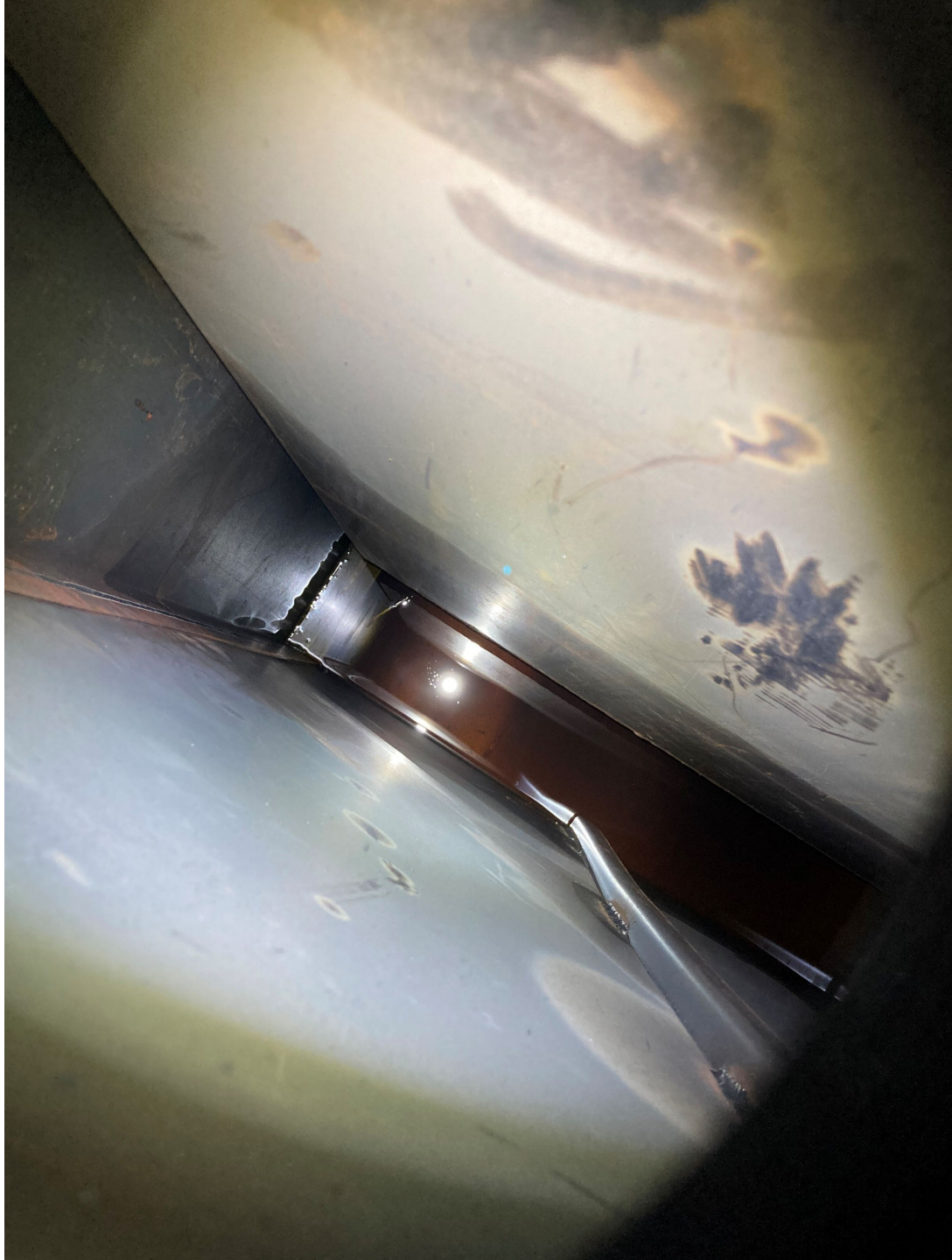




DOUBLE WALL

ON REPORT
ALL GAS EQUIPMENT SHALL
BE INSPECTED PER
ASME SECTION VIII, DIVISION 1, PART UG-110, UG-111, UG-112, UG-113, UG-114, UG-115, UG-116, UG-117, UG-118, UG-119, UG-120, UG-121, UG-122, UG-123, UG-124, UG-125, UG-126, UG-127, UG-128, UG-129, UG-130, UG-131, UG-132, UG-133, UG-134, UG-135, UG-136, UG-137, UG-138, UG-139, UG-140, UG-141, UG-142, UG-143, UG-144, UG-145, UG-146, UG-147, UG-148, UG-149, UG-150, UG-151, UG-152, UG-153, UG-154, UG-155, UG-156, UG-157, UG-158, UG-159, UG-160, UG-161, UG-162, UG-163, UG-164, UG-165, UG-166, UG-167, UG-168, UG-169, UG-170, UG-171, UG-172, UG-173, UG-174, UG-175, UG-176, UG-177, UG-178, UG-179, UG-180, UG-181, UG-182, UG-183, UG-184, UG-185, UG-186, UG-187, UG-188, UG-189, UG-190, UG-191, UG-192, UG-193, UG-194, UG-195, UG-196, UG-197, UG-198, UG-199, UG-200, UG-201, UG-202, UG-203, UG-204, UG-205, UG-206, UG-207, UG-208, UG-209, UG-210, UG-211, UG-212, UG-213, UG-214, UG-215, UG-216, UG-217, UG-218, UG-219, UG-220, UG-221, UG-222, UG-223, UG-224, UG-225, UG-226, UG-227, UG-228, UG-229, UG-230, UG-231, UG-232, UG-233, UG-234, UG-235, UG-236, UG-237, UG-238, UG-239, UG-240, UG-241, UG-242, UG-243, UG-244, UG-245, UG-246, UG-247, UG-248, UG-249, UG-250, UG-251, UG-252, UG-253, UG-254, UG-255, UG-256, UG-257, UG-258, UG-259, UG-260, UG-261, UG-262, UG-263, UG-264, UG-265, UG-266, UG-267, UG-268, UG-269, UG-270, UG-271, UG-272, UG-273, UG-274, UG-275, UG-276, UG-277, UG-278, UG-279, UG-280, UG-281, UG-282, UG-283, UG-284, UG-285, UG-286, UG-287, UG-288, UG-289, UG-290, UG-291, UG-292, UG-293, UG-294, UG-295, UG-296, UG-297, UG-298, UG-299, UG-300, UG-301, UG-302, UG-303, UG-304, UG-305, UG-306, UG-307, UG-308, UG-309, UG-310, UG-311, UG-312, UG-313, UG-314, UG-315, UG-316, UG-317, UG-318, UG-319, UG-320, UG-321, UG-322, UG-323, UG-324, UG-325, UG-326, UG-327, UG-328, UG-329, UG-330, UG-331, UG-332, UG-333, UG-334, UG-335, UG-336, UG-337, UG-338, UG-339, UG-340, UG-341, UG-342, UG-343, UG-344, UG-345, UG-346, UG-347, UG-348, UG-349, UG-350, UG-351, UG-352, UG-353, UG-354, UG-355, UG-356, UG-357, UG-358, UG-359, UG-360, UG-361, UG-362, UG-363, UG-364, UG-365, UG-366, UG-367, UG-368, UG-369, UG-370, UG-371, UG-372, UG-373, UG-374, UG-375, UG-376, UG-377, UG-378, UG-379, UG-380, UG-381, UG-382, UG-383, UG-384, UG-385, UG-386, UG-387, UG-388, UG-389, UG-390, UG-391, UG-392, UG-393, UG-394, UG-395, UG-396, UG-397, UG-398, UG-399, UG-400, UG-401, UG-402, UG-403, UG-404, UG-405, UG-406, UG-407, UG-408, UG-409, UG-410, UG-411, UG-412, UG-413, UG-414, UG-415, UG-416, UG-417, UG-418, UG-419, UG-420, UG-421, UG-422, UG-423, UG-424, UG-425, UG-426, UG-427, UG-428, UG-429, UG-430, UG-431, UG-432, UG-433, UG-434, UG-435, UG-436, UG-437, UG-438, UG-439, UG-440, UG-441, UG-442, UG-443, UG-444, UG-445, UG-446, UG-447, UG-448, UG-449, UG-450, UG-451, UG-452, UG-453, UG-454, UG-455, UG-456, UG-457, UG-458, UG-459, UG-460, UG-461, UG-462, UG-463, UG-464, UG-465, UG-466, UG-467, UG-468, UG-469, UG-470, UG-471, UG-472, UG-473, UG-474, UG-475, UG-476, UG-477, UG-478, UG-479, UG-480, UG-481, UG-482, UG-483, UG-484, UG-485, UG-486, UG-487, UG-488, UG-489, UG-490, UG-491, UG-492, UG-493, UG-494, UG-495, UG-496, UG-497, UG-498, UG-499, UG-500, UG-501, UG-502, UG-503, UG-504, UG-505, UG-506, UG-507, UG-508, UG-509, UG-510, UG-511, UG-512, UG-513, UG-514, UG-515, UG-516, UG-517, UG-518, UG-519, UG-520, UG-521, UG-522, UG-523, UG-524, UG-525, UG-526, UG-527, UG-528, UG-529, UG-530, UG-531, UG-532, UG-533, UG-534, UG-535, UG-536, UG-537, UG-538, UG-539, UG-540, UG-541, UG-542, UG-543, UG-544, UG-545, UG-546, UG-547, UG-548, UG-549, UG-550, UG-551, UG-552, UG-553, UG-554, UG-555, UG-556, UG-557, UG-558, UG-559, UG-560, UG-561, UG-562, UG-563, UG-564, UG-565, UG-566, UG-567, UG-568, UG-569, UG-570, UG-571, UG-572, UG-573, UG-574, UG-575, UG-576, UG-577, UG-578, UG-579, UG-580, UG-581, UG-582, UG-583, UG-584, UG-585, UG-586, UG-587, UG-588, UG-589, UG-590, UG-591, UG-592, UG-593, UG-594, UG-595, UG-596, UG-597, UG-598, UG-599, UG-600, UG-601, UG-602, UG-603, UG-604, UG-605, UG-606, UG-607, UG-608, UG-609, UG-610, UG-611, UG-612, UG-613, UG-614, UG-615, UG-616, UG-617, UG-618, UG-619, UG-620, UG-621, UG-622, UG-623, UG-624, UG-625, UG-626, UG-627, UG-628, UG-629, UG-630, UG-631, UG-632, UG-633, UG-634, UG-635, UG-636, UG-637, UG-638, UG-639, UG-640, UG-641, UG-642, UG-643, UG-644, UG-645, UG-646, UG-647, UG-648, UG-649, UG-650, UG-651, UG-652, UG-653, UG-654, UG-655, UG-656, UG-657, UG-658, UG-659, UG-660, UG-661, UG-662, UG-663, UG-664, UG-665, UG-666, UG-667, UG-668, UG-669, UG-670, UG-671, UG-672, UG-673, UG-674, UG-675, UG-676, UG-677, UG-678, UG-679, UG-680, UG-681, UG-682, UG-683, UG-684, UG-685, UG-686, UG-687, UG-688, UG-689, UG-690, UG-691, UG-692, UG-693, UG-694, UG-695, UG-696, UG-697, UG-698, UG-699, UG-700, UG-701, UG-702, UG-703, UG-704, UG-705, UG-706, UG-707, UG-708, UG-709, UG-710, UG-711, UG-712, UG-713, UG-714, UG-715, UG-716, UG-717, UG-718, UG-719, UG-720, UG-721, UG-722, UG-723, UG-724, UG-725, UG-726, UG-727, UG-728, UG-729, UG-730, UG-731, UG-732, UG-733, UG-734, UG-735, UG-736, UG-737, UG-738, UG-739, UG-740, UG-741, UG-742, UG-743, UG-744, UG-745, UG-746, UG-747, UG-748, UG-749, UG-750, UG-751, UG-752, UG-753, UG-754, UG-755, UG-756, UG-757, UG-758, UG-759, UG-760, UG-761, UG-762, UG-763, UG-764, UG-765, UG-766, UG-767, UG-768, UG-769, UG-770, UG-771, UG-772, UG-773, UG-774, UG-775, UG-776, UG-777, UG-778, UG-779, UG-780, UG-781, UG-782, UG-783, UG-784, UG-785, UG-786, UG-787, UG-788, UG-789, UG-790, UG-791, UG-792, UG-793, UG-794, UG-795, UG-796, UG-797, UG-798, UG-799, UG-800, UG-801, UG-802, UG-803, UG-804, UG-805, UG-806, UG-807, UG-808, UG-809, UG-810, UG-811, UG-812, UG-813, UG-814, UG-815, UG-816, UG-817, UG-818, UG-819, UG-820, UG-821, UG-822, UG-823, UG-824, UG-825, UG-826, UG-827, UG-828, UG-829, UG-830, UG-831, UG-832, UG-833, UG-834, UG-835, UG-836, UG-837, UG-838, UG-839, UG-840, UG-841, UG-842, UG-843, UG-844, UG-845, UG-846, UG-847, UG-848, UG-849, UG-850, UG-851, UG-852, UG-853, UG-854, UG-855, UG-856, UG-857, UG-858, UG-859, UG-860, UG-861, UG-862, UG-863, UG-864, UG-865, UG-866, UG-867, UG-868, UG-869, UG-870, UG-871, UG-872, UG-873, UG-874, UG-875, UG-876, UG-877, UG-878, UG-879, UG-880, UG-881, UG-882, UG-883, UG-884, UG-885, UG-886, UG-887, UG-888, UG-889, UG-890, UG-891, UG-892, UG-893, UG-894, UG-895, UG-896, UG-897, UG-898, UG-899, UG-900, UG-901, UG-902, UG-903, UG-904, UG-905, UG-906, UG-907, UG-908, UG-909, UG-910, UG-911, UG-912, UG-913, UG-914, UG-915, UG-916, UG-917, UG-918, UG-919, UG-920, UG-921, UG-922, UG-923, UG-924, UG-925, UG-926, UG-927, UG-928, UG-929, UG-930, UG-931, UG-932, UG-933, UG-934, UG-935, UG-936, UG-937, UG-938, UG-939, UG-940, UG-941, UG-942, UG-943, UG-944, UG-945, UG-946, UG-947, UG-948, UG-949, UG-950, UG-951, UG-952, UG-953, UG-954, UG-955, UG-956, UG-957, UG-958, UG-959, UG-960, UG-961, UG-962, UG-963, UG-964, UG-965, UG-966, UG-967, UG-968, UG-969, UG-970, UG-971, UG-972, UG-973, UG-974, UG-975, UG-976, UG-977, UG-978, UG-979, UG-980, UG-981, UG-982, UG-983, UG-984, UG-985, UG-986, UG-987, UG-988, UG-989, UG-990, UG-991, UG-992, UG-993, UG-994, UG-995, UG-996, UG-997, UG-998, UG-999, UG-1000







TORAGE

DANGER
DIESEL
FUEL





LOW OIL PRESSURE



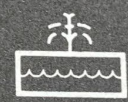
LOW FUEL LEVEL



SYSTEM NOT IN AUTO



LOW BATTERY VOLTAGE



RUPTURE BASIN LEAK



BATTERY CHARGER MALFUNCTION

CATERPILLAR[®]





**EMERGENCY
VENT**

THIS TANK REQUIRES EMERGENCY RELIEF VENTING CAPACITY NOT LESS THAN _____ CUBIC FEET PER HOUR.
THIS TANK INTENDED FOR STATIONARY USE ONLY
TANK CAPACITY _____
THE ANNULAR SPACE REQUIRES EMERGENCY RELIEF VENTING CAPACITY NOT LESS THAN _____ CUBIC FEET PER HOUR.







918S



Test / Cancel

BATTERY LOW

Press BEFORE Filling to Test Alarm.
Press to Silence Alarm.

MORRISON BROS. CO.
www.morbrods.com 800-553-4840



DYED

2,000 Gallon Single Compartment Vault Tank

Primary Tank Dimensions = Length: 134" X Width: 75" X Height: 47"

Actual Capacity = 2,044.81 Gallons

DO NOT FILL PAST 95% CAPACITY

Level Gadge Sensor Calibration

Depth	Actual Inches	Gallons		Depth	Actual Inches	Gallons
0 ft	1 in	43.51		2 ft	25 in	1087.66
	2 in	87.01			26 in	1131.17
	3 in	130.52			27 in	1174.68
	4 in	174.03			28 in	1218.18
	5 in	217.53			29 in	1261.69
	6 in	261.04			30 in	1305.19
	7 in	304.55			31 in	1348.70
	8 in	348.05			32 in	1392.21
	9 in	391.56			33 in	1435.71
	10 in	435.06			34 in	1479.22
	11 in	478.57			35 in	1522.73
	12 in	522.08			36 in	1566.23
1 ft	1 in	565.58		3 ft	37 in	1609.74
	2 in	609.09			38 in	1653.25
	3 in	652.60			39 in	1696.75
	4 in	696.10			40 in	1740.26
	5 in	739.61			41 in	1783.77
	6 in	783.12			42 in	1827.27
	7 in	826.62	90%		43 in	1870.78
	8 in	870.13			44 in	1914.29
	9 in	913.64	95%		45 in	1957.79
	10 in	957.14			46 in	2001.30
	11 in	1000.65			47 in	2044.81
	12 in	1044.16			12 in	

Actual 90% Alarm Point 1840.32

Actual 95% Shut Down 1942.56

	Depth	Actual Inches	Gallons
0 ft	1 in	1 in	43.51
	2 in	2 in	87.01
	3 in	3 in	130.52
	4 in	4 in	174.03
	5 in	5 in	217.53
	6 in	6 in	261.04
	7 in	7 in	304.55
	8 in	8 in	348.05
	9 in	9 in	391.56
	10 in	10 in	435.06
	11 in	11 in	478.57
	12 in	12 in	522.08

	Depth	Actual Inches	Gallons
2 ft	1 in	25 in	1087.66
	2 in	26 in	1131.17
	3 in	27 in	1174.68
	4 in	28 in	1218.18
	5 in	29 in	1261.69
	6 in	30 in	1305.19
	7 in	31 in	1348.70
	8 in	32 in	1392.21
	9 in	33 in	1435.71
	10 in	34 in	1479.22
	11 in	35 in	1522.73
	12 in	36 in	1566.23

1 ft	1 in	13 in	565.58
	2 in	14 in	609.09
	3 in	15 in	652.60
	4 in	16 in	696.10
	5 in	17 in	739.61
	6 in	18 in	783.12
	7 in	19 in	826.62
	8 in	20 in	870.13
	9 in	21 in	913.64
	10 in	22 in	957.14
	11 in	23 in	1000.65
	12 in	24 in	1044.16

3 ft	1 in	37 in	1609.74
	2 in	38 in	1653.25
	3 in	39 in	1696.75
	4 in	40 in	1740.26
	5 in	41 in	1783.77
	6 in	42 in	1827.27
	7 in	43 in	1870.78
	8 in	44 in	1914.29
	9 in	45 in	1957.79
	10 in	46 in	2001.30
	11 in	47 in	2044.81
	12 in		

90%

95%

Actual 90% Alarm Point 1840.32

Actual 95% Shut Down 1942.56