



INS AND OUTS OF THE TIER I QUALIFIED FACILITY SPCC PLAN TEMPLATE

March 30, 2022

G2-3/30

Pete Reich, Janice Witul US EPA Region 9



**24th California Unified Program
Annual Training Conference
March 22, 23, 24, 29, 30, 31 - 2022**

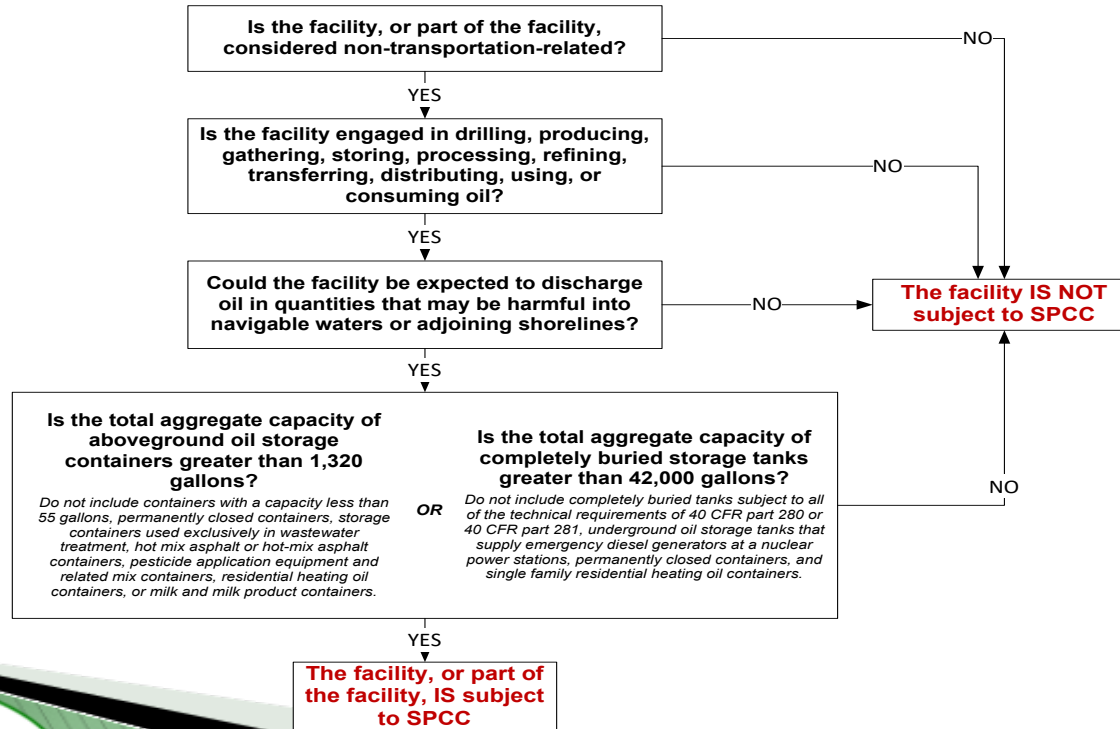
INS and OUTS of the TIER I QUALIFIED FACILITY SPCC PLAN TEMPLATE

First step - confirm applicability



24th California Unified Program
Annual Training Conference
March 22, 23, 24, 29, 30, 31 - 2022

SPCC Applicability Flowchart



Qualified Facility – An Overview

- Smaller oil storage facility that is eligible for alternative streamlined regulatory requirements
- Must meet eligibility criteria to use alternative option
- Self-certified SPCC Plan instead of one reviewed and certified by a Professional Engineer (PE)
- Divided into two tiers

Tier II – self certify the SPCC Plan

Tier I - self certify and eligible to complete a template with fewer requirements



Qualified Facilities Eligibility Criteria

Reportable Discharge History

In the 3 years prior to Plan certification date or when facility began operating
(whichever is less)

A single discharge of oil to navigable waters or adjoining shorelines exceeding **1,000 U.S. gallons**, OR

Two discharges of oil to navigable waters or adjoining shorelines each exceeding **42 U.S. gallons** within any 12-month period



Storage Capacity

Tier II

Aggregate aboveground oil storage capacity $\leq 10,000$ gallons

Tier I

Tier II AND
No oil storage container >5,000 U.S. gallons

No Longer Qualified

If facility capacity increases $>10,000$ gallons



Reportable Discharge History

- The gallon amount(s) specified (either 1,000 or 42) refers to amount of oil that actually reaches navigable waters or adjoining shorelines, not the total amount of oil spilled
- Do not include oil discharges that result from natural disasters, acts of war, or terrorism

Oil discharges that result from vandalism are included

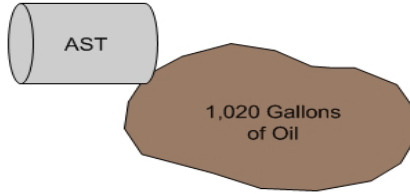
- Facilities that have a reportable oil discharge after self-certifying the SPCC Plan do not automatically lose eligibility

The Regional Administrator has the authority to require a Plan amendment

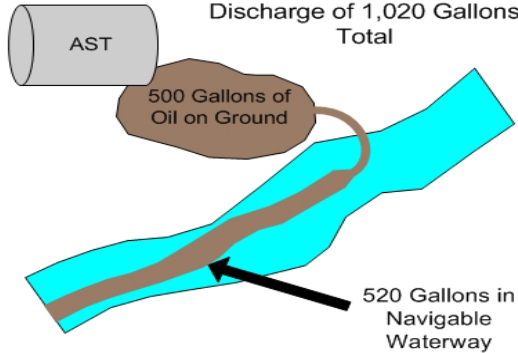


Understanding Discharge Criterion

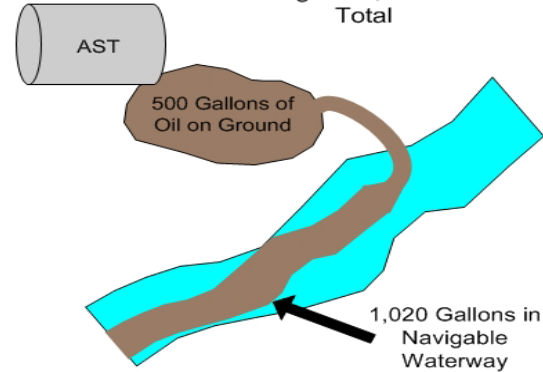
A) Discharge of 1,020 Gallons Total



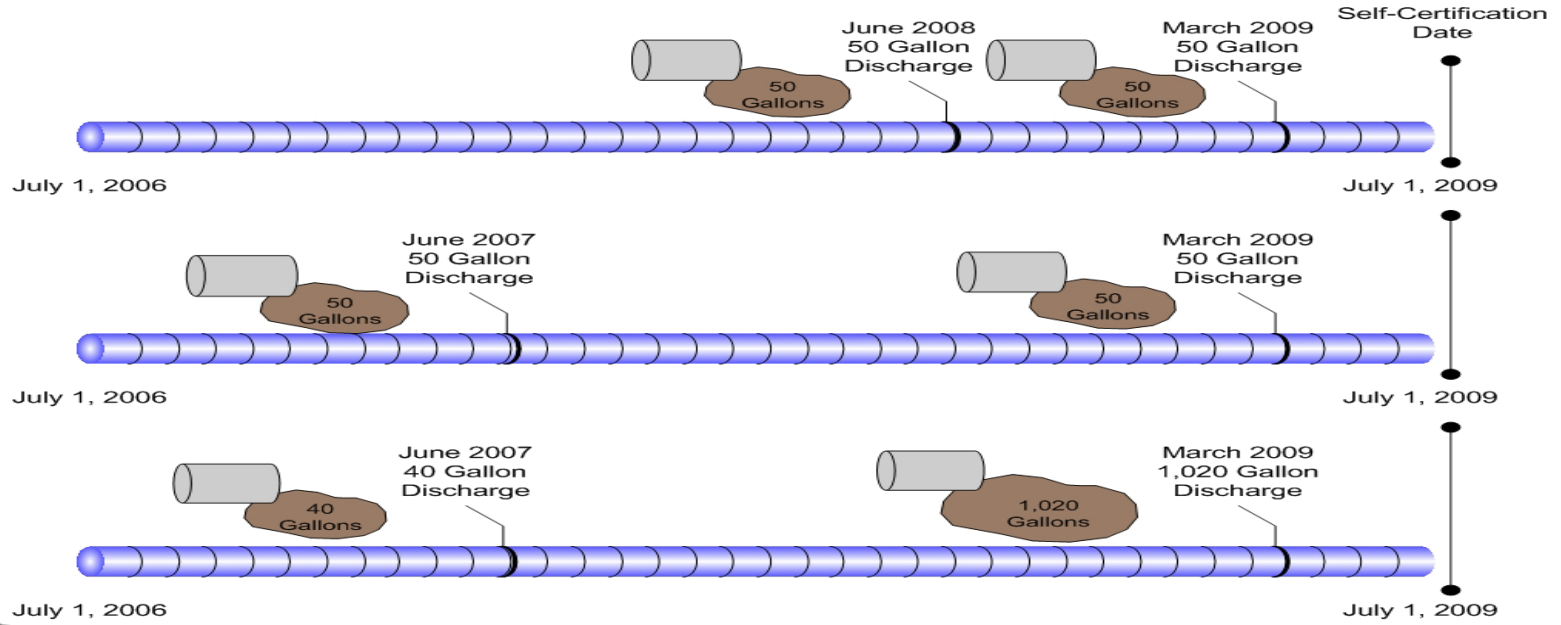
B) Discharge of 1,020 Gallons Total



C) Discharge of 1,520 Gallons Total



Understanding Discharge History



Three Year Timelines



Discharge History Criterion

- A one-time determination
 - i.e., a “snap shot” of a facility’s compliance history
- Facilities do not require a re-assessment of eligibility following a technical change to the Plan or 5-year review



24th California Unified Program
Annual Training Conference
March 22, 23, 24, 29, 30, 31 - 2022

Self-Certification Attestation

- Owner/operator attests that he/she is familiar with the SPCC Rule and has visited and examined the facility
- Owner/operator also certifies that:
 - The Plan has been prepared in accordance with accepted and sound industry practices and standards and with the Rule requirements
 - Procedures for required inspections and testing have been established
 - The Plan is being fully implemented
 - The facility meets the qualifying criteria
 - The Plan does not deviate from Rule requirements except as allowed and as certified by a PE **(allowed only for Tier II Plans)**
 - Management approves the Plan and has committed resources to implement it



Self-Certification Issues

- Larger corporations/government entities with many smaller facilities have raised questions regarding self-certification
 - Power industry
 - Communications industry (cell towers)
 - NPS, USFW, FAA
- The certification must be completed by a person who visited the facility (no agent allowed)
 - A central environmental office can develop the Plans to be certified by the local facility operator representation, or the central office can visit each facility and complete the certification
- Certain states prohibit anyone other than a PE from certifying an SPCC Plan
 - Instruct owners or operators to contact their local state PE licensing boards



Qualified Facility Tiers

Tier II

- Self-certify the SPCC Plan
- Meet all applicable rule requirements
- Can deviate from rule requirements with PE certification

Tier I

- Self-certify the SPCC Plan
- Meet streamlined set of rule requirements
- No deviations



Why are Tier I QFs Unique?

- “Tier I qualified facilities” have:
 - The least complicated operations and facility characteristics
 - May have few low-capacity oil containers and some mobile/portable containers, few oil transfers, little to no piping
- The choice for Tier I or Tier II is optional if the qualifying criteria are met



Tier I SPCC Plan Template

- A Tier I qualified facility has the option to complete a streamlined **SPCC Plan template** in lieu of a full SPCC Plan
- Template is designed to be a simple SPCC Plan
 - Includes only the requirements that should apply to this tier of regulated facilities
 - Eliminates and/or modifies certain requirements and provisions that generally do not apply to facilities that store or handle smaller volumes of oil
- Template is found in **Appendix G** to the SPCC Rule



Simplified Requirements for Tier I

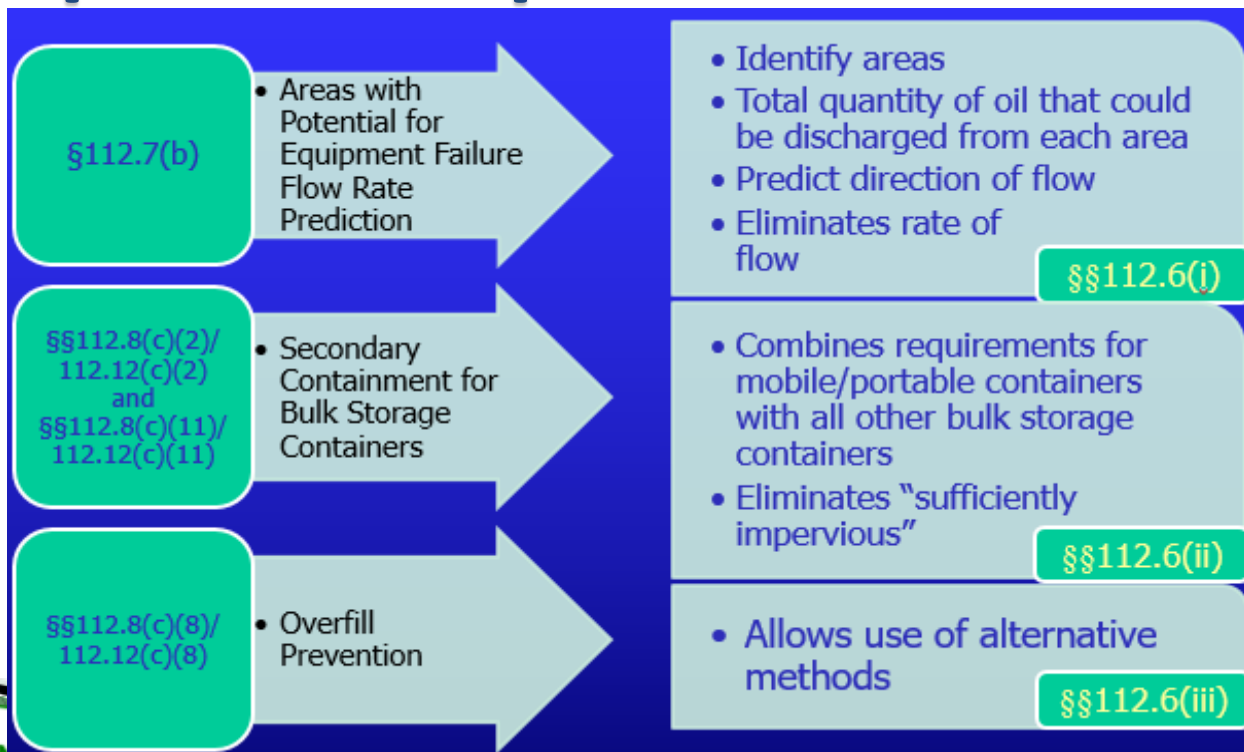
The following requirements apply:

- Introductory paragraph of §112.7
- Parts of the facility description
- General secondary containment
- Inspections, tests and records
- Personnel, training, and discharge prevention procedures
- Security requirements

- Qualified oil-filled operational equipment (as applicable)
- Facility drainage
- Certain requirements for bulk storage containers
- Piping inspections
- Certain oil production facility requirements (as applicable)
- Requirements for onshore oil drilling and workover facilities (as applicable)



Simplified Requirements for Tier I



Simplified Requirements for Tier I

Does Not Apply:

Facility diagram <ul style="list-style-type: none">• §112.7(a)(3)	Monitoring internal heating coils <ul style="list-style-type: none">• §§112.8(c)(7) and 112.12(c)(7)
Facility description <ul style="list-style-type: none">• §§112.7(a)(3)(ii), 112.7(a)(3)(iii) and 112.7(a)(3)(v)	Effluent treatment facilities <ul style="list-style-type: none">• §§112.8(c)(9) and 112.12(c)(9)
Loading/unloading rack <ul style="list-style-type: none">• §112.7(h)	Facility transfer operations <ul style="list-style-type: none">• Piping §§112.8(d)(1), 112.8(d)(2), 112.8(d)(3), 112.8(d)(5), and 112.12(d)(1), 112.12(d)(2), 112.12(d)(3), 112.12(d)(5)• Inspecting saltwater disposal facilities 112.9(d)(2)
Brittle fracture evaluation <ul style="list-style-type: none">• §112.7(i)	
Facility drainage <ul style="list-style-type: none">• §§112.8(b)(3), 112.8(b)(4), 112.8(b)(5), and 112.12(b)(3), 112.12(b)(4), 112.12(b)(5)	



Qualified Facility Outreach Materials

- Qualified Facility Applicability Guidance
- Tier I SPCC Plan Template
- Tier I Farm Sample Plan
- Secondary Containment Calculation Worksheets
 - Blank Worksheets
 - Example Worksheets



Qualified Facility Outreach Materials

Available at: <http://www2.epa.gov/oil-spills-prevention-and-preparedness-regulations/tier-i-qualified-facility-spcc-plan-template>

State Professional Engineer (PE) Licensing Board Contacts

<https://www.epa.gov/oil-spills-prevention-and-preparedness-regulations/state-professional-engineer-pe-licensing-board>

Fact Sheet: Is My Facility a "Qualified Facility" under the SPCC Rule?

<https://www.epa.gov/oil-spills-prevention-and-preparedness-regulations/fact-sheet-my-facility-qualified-facility-under>



Tier I Qualified Facility SPCC Plan

Here is an example of an automotive service station facility and how the owner determines he is covered by the SPCC rule and prepares an SPCC Plan.

Gas and Care Express located in Malham, Pennsylvania is a self-service gasoline station and automotive service shop. The facility is owned and operated by Jack Smith and is located at the intersection of Anywhere and Sideways Streets, with an empty lot to the back of the facility. A concrete storm drainage channel runs past one side of the empty lot and conveys storm water into an unnamed creek about a 1/4-mile downstream from this location. The unnamed creek is a tributary of Muddy Creek, which is a tributary to the Susquehanna River. Storm water runoff collected by street storm culverts is conveyed by the storm sewer into Muddy Creek at an outfall about 1 mile away. Gas and Care Express consists of one main building housing the 3-bay service shop and the sales and customer service area. The facility has two gasoline dispenser islands, each with two dispensers, under a lit canopy.



Facility Description, continued

There are three stationary oil Aboveground Storage Tanks (ASTs) at Gas and Care Express. The 1,500-gallon AST for collecting waste oil is a horizontal, cylindrical shop-fabricated tank on concrete saddles resting on a concrete pad within a concrete dike. Constructed in accordance with UL 142, the tank has a direct reading liquid level gauge and a fill pipe with a 5-gallon steel containment sump. The tank fill pipe sump drains back into the tank. Employees transfer waste oil from the collection containers in the shop into this tank using a hand-operated pump. A 275-gallon double-walled AST stores heating oil to heat the service shop during the heating season. A 500-gallon double-walled fire-resistant AST with an on-tank dispenser stores kerosene for sale.



Facility Description, continued

Other aboveground storage containers inside the auto service shop are: six single use rack-mounted 65-gallon drums in a lube oil dispensing system and another six single-use rack-mounted 65-gallon drums for dispensing automatic transmission fluid (3 drums), gear oil (1 drum), and hydraulic oil (2 drums). Each of the three service bays is equipped with a single post swing rail drive-over lift, which has a 42-gallon hydraulic oil reservoir.

A filter crusher in the shop has a 30-gallon used oil collection steel drum. The shop collects used antifreeze for recycling in two 30-gallon polyethylene totes. There are two hydraulic floor jacks with hydraulic oil reservoirs that store less than 0.5 pint of oil.



Facility Description, continued

Gas and Care Express has an emergency generator to power the gasoline sales operation and the facility lighting during electricity outages. The emergency generator is powered by natural gas but has a 250-gallon Liquid Propane (LP) gas cylinder as a backup fuel. The customer service and auto shop also stocks containers of lube oil, refrigerant oil, brake oil, gear oil, automatic transmission fluid, and power steering fluid products for use and sale. Container sizes range from 8 ounces or ½ pint to 1 gallon.

Gasoline is stored in 3-10,000-gallon double-wall steel completely buried Underground Storage Tanks (USTs). These USTs are constructed according to the Underwriters' Laboratory (UL) 58 standard.



Facility Description, continued

Gasoline is transferred to the dispensers through buried, double-walled fiberglass-reinforced plastic fuel transfer piping with interstitial monitoring associated with the USTs. Oil transfer piping at the facility is belowground, except for the aboveground transfer piping and appurtenances at the gasoline dispensers, the kerosene on-tank dispenser, and the gasoline drop fill ports. A fuel supplier delivers gasoline, heating oil, and kerosene via tank trucks. Another supplier fills the shop's oil products dispensing system 65-gallon drums. A commercial waste hauler periodically comes to the facility to remove both the waste oil collected in the waste oil AST for disposal and the used antifreeze totes to recycle the antifreeze.



Spill History

The facility had the following discharges in the three years prior to the date that Mr. Smith certified his Plan (07/15/2011):

- November 20, 2008 – 20-gallon gasoline spill reached the nearest culvert along Sideways Street and into Muddy Creek;
- March 7, 2010 – Contained 1-gallon gasoline spill to dispensing area concrete pavement (customer overfilled vehicle).



Oil Container Inventory

The following containers are subject to the SPCC rule:

- 1,500-gallon waste oil AST (stationary aboveground bulk storage container)
- 275-gallon heating oil AST (only heating oil tanks used solely at single-family homes are exempt from the SPCC rule)
- 500-gallon kerosene AST (stationary aboveground bulk storage container)
- Oil products rack dispensing system (includes twelve 65-gallon oil drums, total capacity = 780 gallons)

Facility Total AST capacity

1,500+275+500+780 = 3,055 gallons



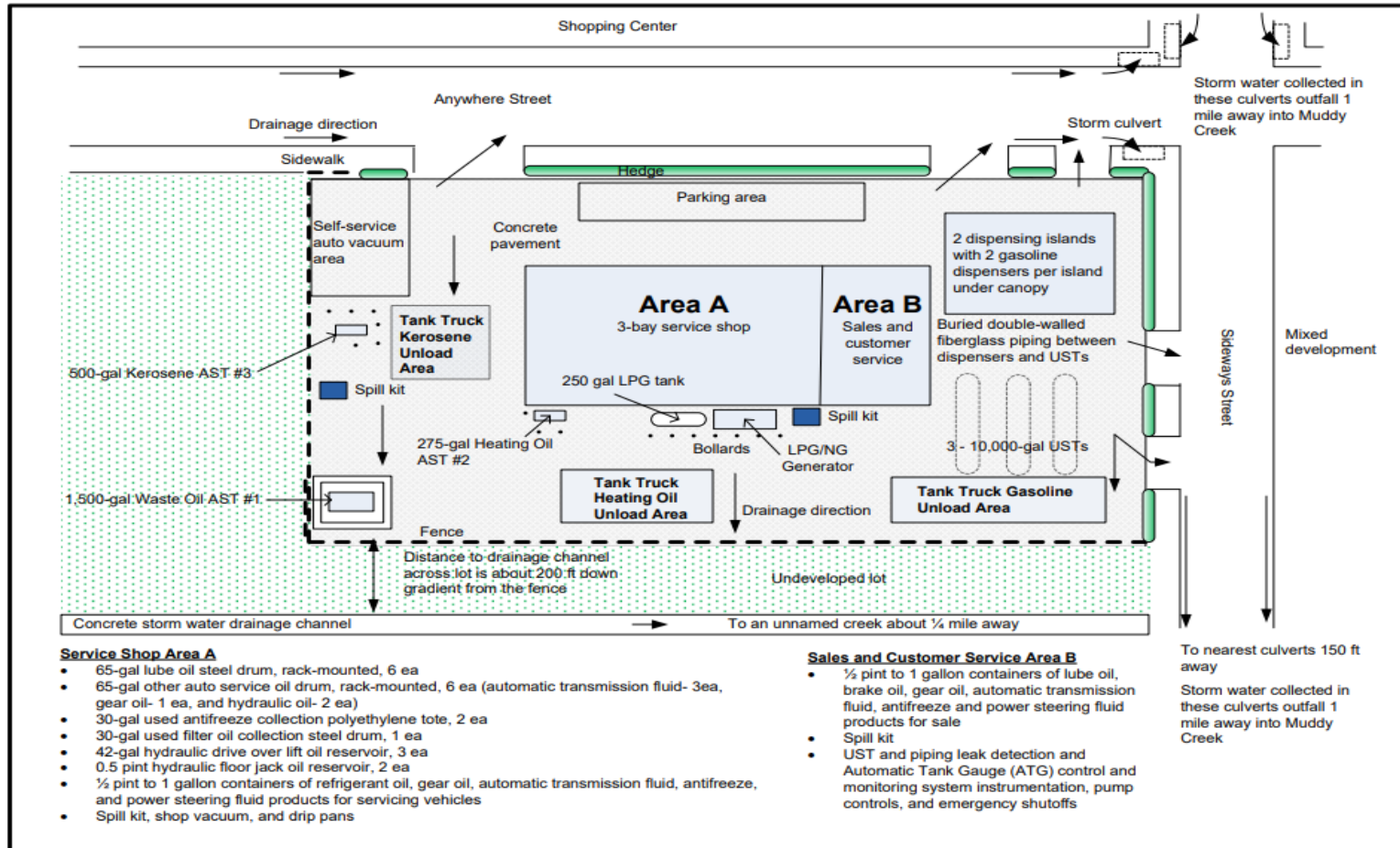
The following containers are exempt from the SPCC rule:

- Three 10,000-gallon completely buried gasoline USTs -These containers are exempt because they are subject to the technical requirements of the UST rule (see 40 CFR 280 or 281)
- Any bulk storage container or oil-filled operational equipment that has a capacity of less than 55 gallons:
 - Two 30-gallon used antifreeze totes,
 - 30-gallon oil filter crusher drum,
 - 42-gallon post lift hydraulic oil reservoirs,
 - 0.5-pint floor jack hydraulic oil reservoirs, and
 - Containers ranging from 0.5 pint to 1 gallon capacity of lube oil, refrigerant oil, brake oil, gear oil, automatic transmission fluid, and power steering fluid products
- 250-gallon LP gas tank for the emergency generator (the SPCC rule does not regulate gases)



Tier I Template SPCC Plan – Gas and Care Express Service Station

This facility diagram is only for illustrating the example facility to help readers visualize the information in the scenario and the sample SPCC Plan. Inclusion of a facility diagram in the SPCC Plan is not a requirement for a Tier I Qualified Facility opting to complete the Tier I Qualified Facility SPCC Plan Template.



Step 1

Determine if the Gas and Care Express needs an SPCC Plan.

Jack Smith, owner of the Gas and Care Express, believes he may have to develop, maintain, and implement a spill prevention plan under the SPCC rule. Let's walk through the following scenario to determine if he needs an SPCC Plan, and if so, then we need to determine if he is eligible to self-certify his SPCC Plan and use the Tier I SPCC Plan Template.

Is the facility considered non-transportation-related?

Yes, the facility stores, uses, and consumes oil—all non- transportation related activities.



Step 1, continued

Is the facility engaged in drilling, producing, gathering, storing, processing, refining, transferring, distributing, using, or consuming oil?

Yes, the facility stores, uses, and consumes oil.

Could the facility reasonably be expected to discharge oil in quantities that may be harmful into navigable waters or adjoining shorelines?

Yes, an oil spill from the facility could reach the Muddy Creek which is a tributary of the Susquehanna River.



Step 1, continued

Is the total aggregate capacity of aboveground oil storage containers greater than 1,320 gallons of oil; or is the total aggregate capacity of completely buried storage tanks greater than 42,000 gallons of oil?

Yes, the aboveground oil storage capacity is 3,055 gallons. An oil spill from the Gas and Care Express may reach a navigable waterway and the aboveground oil storage capacity is greater than 1,320 gallons. Jack Smith needs to develop an SPCC Plan.



Step 2

Determine if Jack Smith can certify the SPCC Plan and complete the template.

Has the facility had any oil spills that reached navigable waters in the past three years?

Yes, an oil spill from this facility can and did reach navigable waters.

Were any of these oil spills larger than 1,000 gallons?

No.



Step 2, continued

Was oil spilled to navigable waters more than once in a 12- month period?

No, only one spill on November 20, 2008 reached navigable waters (Muddy Creek). The March 7, 2010 spill did not reach navigable waters and if it did, it occurred more than 12 months after the November 20, 2008 spill.

Did more than 42 gallons of spilled oil reach navigable waters in both discharges?

No. On November 20, 2008, only 20 gallons reached navigable waters. The vehicle overfill spill was onto the facility's concrete pavement where it was contained and removed. There was no single discharge of oil to navigable waters exceeding 1,000 U.S. gallons, nor two discharges of oil to navigable waters each exceeding 42 U.S. gallons within any twelve-month period.



Step 2, continued

Is the aboveground oil storage capacity 10,000 gallons or less?

Yes, Gas and Care Express is a qualified facility and Jack Smith can self-certify the SPCC Plan.

Are any aboveground oil storage containers at the facility larger than 5,000 gallons capacity?

No. Gas and Care Express is a Tier I Qualified Facility and Jack Smith can complete the SPCC Plan template in Appendix G of the rule (as long as he does not deviate from any rule requirements).



Step 3

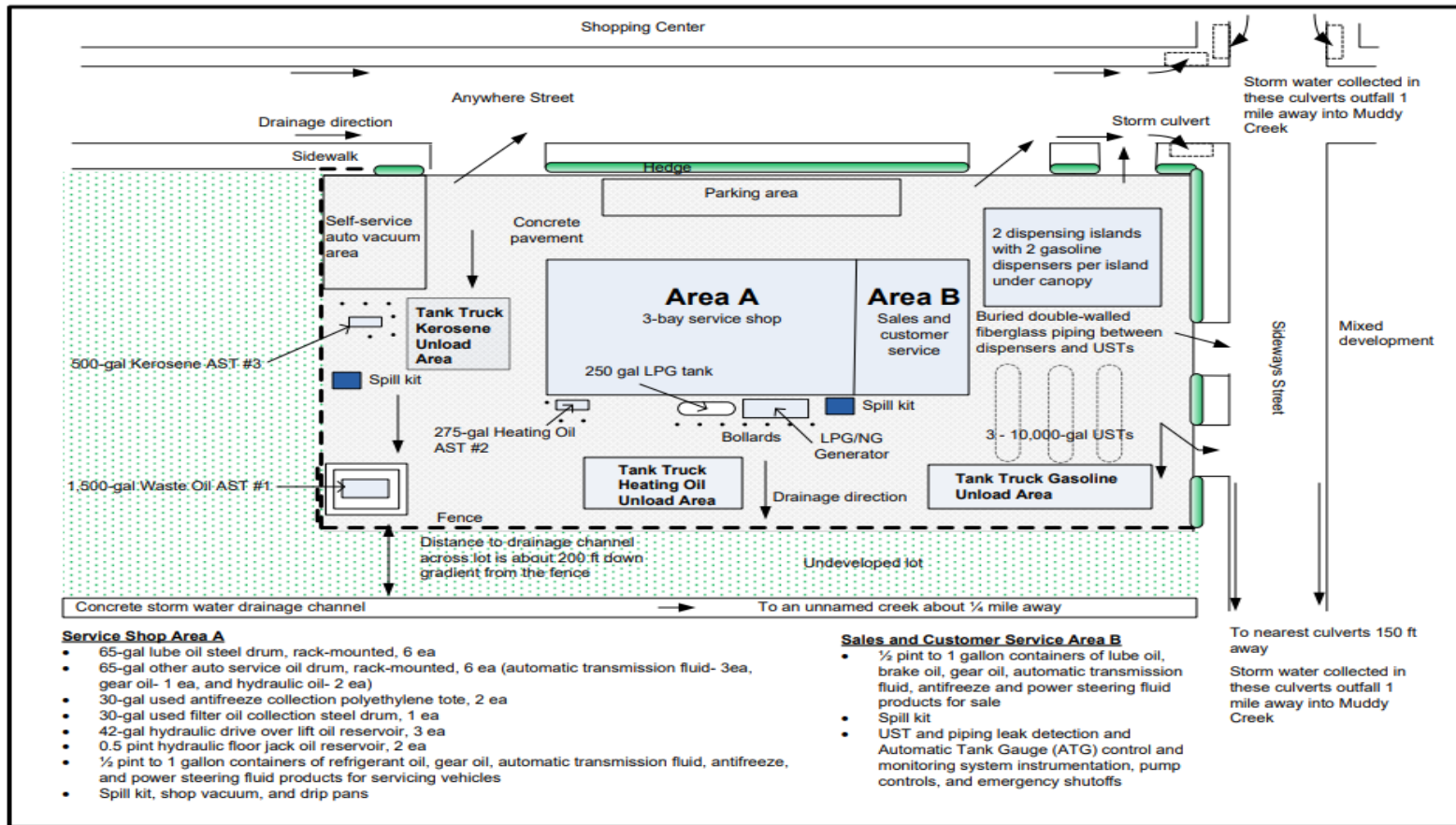
Prepare and implement an SPCC Plan.

Up next – an Example SPCC Tier I Plan completed for Gas and Care Express using the Appendix G template.



Tier I Template SPCC Plan – Gas and Care Express Service Station

This facility diagram is only for illustrating the example facility to help readers visualize the information in the scenario and the sample SPCC Plan. Inclusion of a facility diagram in the SPCC Plan is not a requirement for a Tier I Qualified Facility opting to complete the Tier I Qualified Facility SPCC Plan Template.



Program
reference



U.S. ENVIRONMENTAL PROTECTION AGENCY TIER I QUALIFIED FACILITY SPCC PLAN TEMPLATE

Instructions to Complete this Template

This template is intended to help the owner or operator of a Tier I qualified facility develop a self-certified Spill Prevention, Control, and Countermeasure (SPCC) Plan. To use this template, your facility must meet all of the applicability criteria of a Tier I qualified facility listed under §112.3(g)(1) of the SPCC rule. This template provides every SPCC rule requirement necessary for a Tier I qualified facility, which you must address and implement.

You may use this template to comply with the SPCC regulation or use it as a model and modify it as necessary to meet your facility-specific needs. If you modify the template, your Plan must include a section cross-referencing the location of each applicable requirement of the SPCC rule and you must ensure that your Plan is an equivalent Plan that meets all applicable rule requirements of 40 CFR 112.6(a)(3).

You may complete this template either electronically or by hand on a printed copy. This document is a reformatted version of the template found in Appendix G of 40 CFR part 112.^a No substantive changes have been made. Please note that a "Not Applicable" ("N/A") column has been added to both Table G-10 (General Rule Requirements for Onshore Facilities) and Table G-11 (General Rule Requirements for Onshore Oil Production Facilities). The "N/A" column should help you complete your self-certification when a required rule element does not apply to your facility. Use of the "N/A" column is optional and is not required by rule.

All Tier I qualified facility self-certifiers must complete Sections I, II, and III. Additionally, the owner or operator of an:

- Onshore facility (excluding production) must complete Section A.
- Onshore oil production facility (excluding drilling and workover facilities) must complete Section B.
- Onshore oil drilling and workover facility must complete Section C.

Complete and include with your Plan the appropriate attachments. You should consider printing copies of the attachments for use in implementing the SPCC Plan (e.g. Attachment 3.1 - Inspection Log & Schedule; Attachment 4 - Discharge Notification Form).

To complete the template, check the box next to the requirement to indicate that it has been adequately addressed. Either write "N/A" in the column or check the box under the "N/A" column to indicate those requirements that are not applicable to the facility. Where a section requires a description or listing, write in the spaces provided (or attach additional descriptions if more space is needed).

Below is a key for the colors used in the section headers:

Sections I, II, and III: Required for all Tier I qualified facilities
Section A: Onshore facilities (excluding production)
Section B: Onshore oil production facilities (excluding drilling and workover facilities)
Section C: Onshore oil drilling and workover facilities
Attachments: 1 - Five Year Review and Technical Amendment Logs 2 - Oil Spill Contingency Plan and Checklist 3 - Inspections, Dike Drainage and Personnel Training Logs 4 - Discharge Notification Form

After you have completed all appropriate sections, certify and date your Plan, and then implement it by the compliance date. If your facility was in operation before August 16, 2002, and you do not already have a Plan, then implement this template immediately. Conduct inspections and tests in accordance with the written procedures that you have developed for your facility. You must keep with the SPCC Plan a record of these inspections and tests, signed by the appropriate supervisor or inspector, for a period of three years.

Do not forget to periodically review your Plan (at least once every five years) or to update it when you make changes to your facility. You must prepare amendments within six months of the facility change, and implement them as soon as possible, but not later than six months following any amendment.

In the event that your facility releases oil to navigable waters or adjoining shorelines, immediately call the National Response Center (NRC) at 1-800-424-8802. The NRC is the federal government's centralized reporting center, which is staffed 24 hours per day by U.S. Coast Guard personnel.

^a Please note that the use of this template is not mandatory for a Tier I qualified facility. You may also meet the SPCC Plan requirement by preparing a satisfactory Tier II qualified facility Plan, preparing a satisfactory Plan that is certified by a Professional Engineer, or by developing an equivalent Plan for a Tier I qualified facility. Further information on the requirements of these methods can be found in 40 CFR part 112.6(a)(1). If you use any of these alternative methods you must include a cross reference in your Plan that shows how the equivalent Plan meets all applicable 40 CFR part 112 requirements.

Tier I Qualified Facility SPCC Plan

Facility information in this example SPCC Plan is identified by blue text to distinguish this information from the template text.

This template constitutes the SPCC Plan for the facility, when completed and signed by the owner or operator of a facility that meets the applicability criteria in §112.3(g)(1). This template addresses the requirements of 40 CFR Part 112. Maintain a complete copy of the Plan at the facility if the facility is normally attended at least four hours per day, or for a facility attended fewer than four hours per day, at the nearest field office. When making operational changes at a facility that are necessary to comply with the rule requirements, the owner/operator should follow state and local requirements (such as for permitting, design and construction) and obtain professional assistance, as appropriate.

Facility Description

Facility Name Gas and Care Express

Facility Address 345 Anywhere Street

City Malham State PA ZIP 17400

County York Tel. Number (717) 888 – 7777

Owner or Operator Name Jack Smith

Owner or Operator Address 18 Anywhere Street

City Malham State PA ZIP 17400

County York Tel. Number (717) 888 – 6060

Owner or operator Name Same as above

Owner or Operator Address Same as above

City _____ State _____ ZIP _____

County _____ Tel. Number _____



I. Self-Certification Statement (§112.6(a)(1))

The owner or operator of a facility certifies that each of the following is true in order to utilize this template to comply with the SPCC requirements:

I Jack Smith certify that the following is accurate:

1. I am familiar with the applicable requirements of 40 CFR part 112;
2. I have visited and examined the facility;
3. This Plan was prepared in accordance with accepted and sound industry practices and standards;
4. Procedures for required inspections and testing have been established in accordance with industry inspection and testing standards or recommended practices;
5. I will fully implement the Plan;
6. This facility meets the following qualification criteria (under §112.3(g)(1)):
 - a. The aggregate aboveground oil storage capacity of the facility is 10,000 U.S. gallons or less; and
 - b. The facility has had no single discharge as described in §112.1(b) exceeding 1,000 U.S. gallons and no two discharges as described in §112.1(b) each exceeding 42 U.S. gallons within any twelve month period in the three years prior to the SPCC Plan self-certification date, or since becoming subject to 40 CFR part 112 if the facility has been in operation for less than three years (not including oil discharges as described in §112.1(b) that are the result of natural disasters, acts of war, or terrorism); and
 - c. There is no individual oil storage container at the facility with an aboveground capacity greater than 5,000 U.S. gallons.
7. This Plan does not deviate from any requirement of 40 CFR part 112 as allowed by §112.7(a)(2) (environmental equivalence) and §112.7(d) (impracticability of secondary containment) or include any measures pursuant to §112.9(c)(6) for produced water containers and any associated piping;
8. This Plan and individual(s) responsible for implementing this Plan have the full approval of management and I have committed the necessary resources to fully implement this Plan.

Facility Name: Gas and Care Express

Page 1

Tier I Qualified Facility SPCC Plan



24th California Unified Program
Annual Training Conference
March 22, 23, 24, 29, 30, 31 - 2022

I also understand my other obligations relating to the storage of oil at this facility, including, among others:

1. To report any oil discharge to navigable waters or adjoining shorelines to the appropriate authorities. Notification information is included in this Plan.
2. To review and amend this Plan whenever there is a material change at the facility that affects the potential for an oil discharge, and at least once every five years. Reviews and amendments are recorded in an attached log. [See Five Year Review Log and Technical Amendment Log in Attachments 1.1 and 1.2.]
3. Optional use of a contingency plan. A contingency plan:
 - a. May be used in lieu of secondary containment for qualified oil-filled operational equipment, in accordance with the requirements under §112.7(k), and;
 - b. Must be prepared for flowlines and/or intra-facility gathering lines which do not have secondary containment at an oil production facility, and;
 - c. Must include an established and documented inspection or monitoring program; must follow the provisions of 40 CFR part 109; and must include a written commitment of manpower, equipment and materials to expeditiously remove any quantity of oil discharged that may be harmful. If applicable, a copy of the contingency plan and any additional documentation will be attached to this Plan as Attachment 2.

I certify that I have satisfied the requirement to prepare and implement a Plan under §112.3 and all of the requirements under §112.6(a). I certify that the information contained in this Plan is true.

Signature Jack Smith
Name Jack Smith

Title: Owner
Date: 07 / 15 / 2011



II. Record of Plan Review and Amendments

Five Year Review (§112.5(b)):

Complete a review and evaluation of this SPCC Plan at least once every five years. As a result of the review, amend this Plan within six months to include more effective prevention and control measures for the facility, if applicable. Implement any SPCC Plan amendment as soon as possible, but no later than six months following Plan amendment. Document completion of the review and evaluation, and complete the Five Year Review Log in Attachment 1.1. If the facility no longer meets Tier I qualified facility eligibility, the owner or operator must revise the Plan to meet Tier II qualified facility requirements, or complete a full PE certified Plan.

Table G-1 Technical Amendments (§§112.5(a), (c) and 112.6(a)(2))	
This SPCC Plan will be amended when there is a change in the facility design, construction, operation, or maintenance that materially affects the potential for a discharge to navigable waters or adjoining shorelines. Examples include adding or removing containers, reconstruction, replacement, or installation of piping systems, changes to secondary containment systems, changes in product stored at this facility, or revisions to standard operating procedures.	<input checked="" type="checkbox"/>
Any technical amendments to this Plan will be re-certified in accordance with Section I of this Plan template. [§112.6(a)(2)] [See Technical Amendment Log in Attachment 1.2]	<input checked="" type="checkbox"/>



III. Plan Requirements

1. Oil Storage Containers (§112.7(a)(3)(i)):

Table G-2 Oil Storage Containers and Capacities		
This table includes a complete list of all oil storage containers (aboveground containers ^a and completely buried tanks ^b) with capacity of 55 U.S. gallons or more, unless otherwise exempt from the rule. For mobile/portable containers, an estimated number of containers, types of oil, and anticipated capacities are provided.		☒
Oil Storage Container (indicate whether aboveground (A) or completely buried (B))	Type of Oil	Shell Capacity (gallons)
A – Horizontal, single wall, cylindrical UL-142 steel tank #1 on concrete saddles and pad	Waste oil	1,500
A – Steel drums #1 to # 6, each 65 gallons in shell capacity	Lube oil	390
A – Steel drums #7, #8, and #9, each 65 gallons in shell capacity	Automatic transmission fluid	195
A – Steel drum #10	Gear oil	65
A – Steel drums #11 and #12, each 65 gallons in shell capacity	Hydraulic oil	130
A – Rectangular, double-walled tank #2 consisting of a polyethylene inner tank enclosed with a steel outer jacket	Heating oil	275
A – Horizontal, double-walled, cylindrical UL-142 and F921 fire resistant steel tank #3 with on-tank dispenser and on steel saddles	Kerosene	500

Total Aboveground Storage Capacity^c	<u>3,055</u>	gallons
Total Completely Buried Storage Capacity	<u>0</u>	gallons
Facility Total Oil Storage Capacity	<u>3,055</u>	gallons



^a Aboveground storage containers that must be included when calculating total facility oil storage capacity include: tanks and mobile or portable containers; oil-filled operational equipment (e.g., transformers); other oil-filled equipment, such as flow-through process equipment. Exempt containers that are not included in the capacity calculation include: any container with a storage capacity of less than 55 gallons of oil; containers used exclusively for wastewater treatment; permanently closed containers; motive power containers; hot-mix asphalt containers; heating oil containers used solely at a single-family residence; and pesticide application equipment or related mix containers.

Please note that the owner or operator is still responsible to respond to spills that threaten water from any oil containers (including those that are exempt) and report any spills that reach navigable waters; consequently, the owner or operator may want to consider providing secondary containment for these containers. Facilities with oil containers should also consult with state or local authorities or agencies to determine whether there are regulatory or code requirements, for instance fire and worker safety codes, that apply to the containers. Also, note that exempt containers and any other object stored in secondary containment structures, e.g., dikes and berm, for tanks regulated by the SPCC rule reduce their containment capacity, increasing the potential for a reportable oil discharge and may violate fire and safety code requirements.

^b Although the criteria to determine eligibility for qualified facilities focuses on the aboveground oil storage containers at the facility, the completely buried tanks at a qualified facility are still subject to the rule requirements and must be addressed in the template; however, they are not counted toward the qualified facility applicability threshold.

^c Counts toward qualified facility applicability threshold.

2. Secondary Containment and Oil Spill Control (§§112.6(a)(3)(i) and (ii), 112.7(c) and 112.9(c)(2)):

Table G-3 Secondary Containment and Oil Spill Control	
Appropriate secondary containment and/or diversionary structures or equipment ^a is provided for all oil handling containers, equipment, and transfer areas to prevent a discharge to navigable waters or adjoining shorelines. The entire secondary containment system, including walls and floor, is capable of containing oil and is constructed so that any discharge from a primary containment system, such as a tank or pipe, will not escape the containment system before cleanup occurs.	<input checked="" type="checkbox"/>

^a Use one of the following methods of secondary containment or its equivalent: (1) Dikes, berms, or retaining walls sufficiently impervious to contain oil; (2) Curbing; (3) Culverting, gutters, or other drainage systems; (4) Weirs, booms, or other barriers; (5) Spill diversion ponds; (6) Retention ponds; or (7) Sorbent materials.

At an SPCC-regulated facility, all areas with the potential for discharging oil must comply with the general secondary containment requirements specified in §112.7(c). In this scenario, the following areas are subject to the general secondary containment requirements:

- Oil transfer areas (e.g., the gasoline dispenser islands, the kerosene dispenser, the tank truck fuel unloading areas, and the filling of service oil dispensing drums inside the shop),*
- Aboveground transfer equipment (e.g., the fuel and automotive service oil dispensing hoses and appurtenances), and*
- Oil storage containers with a capacity of 55 gallons or greater and associated appurtenances (e.g., overfill vents on double-walled tanks)*



Table G-4 below identifies the tanks and containers at the facility with the potential for an oil discharge; the mode of failure; the flow direction and potential quantity of the discharge; and the secondary containment method and containment capacity that is provided.

Table G-4 Containers with Potential for an Oil Discharge					
Area	Type of failure (discharge scenario)	Potential discharge volume (gallons)	Direction of flow for uncontained discharge	Secondary containment method ^a	Secondary containment capacity (gallons)
Bulk Storage Containers and Mobile/Portable Containers^b					
1,500 gal waste oil tank #1	Tank overflow, fitting leak, seam failure	<1 – 1,500	South to undeveloped lot	Concrete pad and dike	2,356
65 gal lube oil drums #1 to #6 (inside shop)	Fitting leak, seam failure	<1 – 65	To shop floor	Steel leak tray	80
65 gal other oil product drums #7 to #12 (inside shop)	Fitting leak, seam failure	<1 – 65	To shop floor	Steel leak tray	80
Heating oil tank #2	Tank overflow, fitting leak, seam failure	<1 – 275	South to undeveloped lot	Double wall	280
Kerosene tank #3	Tank overflow, fitting leak, seam failure	<1 – 500	South to undeveloped lot	Double wall	515
Oil-filled Operational Equipment (e.g., hydraulic equipment, transformers)^c					
None with container > 55 gallons					
Piping, Valves, etc.					
Oil dispensing hoses and appurtenances (inside shop)	Fitting leak or failure, hose failure	< 1	To shop floor	Spill kit and drip pans	Absorbs up to 30/pans contain up to 2
Product Transfer Areas (location where oil is loaded to or from a container, pipe or other piece of equipment.)					
Automotive oil servicing in shop and filling oil dispensing system drums	Handling drips and spills, drum overflow, transfer hose failure	<1 pt – 0.5	To shop floor	Catch pans and spill kit	Absorbs up to 30/pans contain up to 2
Gasoline, heating oil, and kerosene unload areas	Receiving tank overflow, fitting leak or failure, fuel transfer hose failure	1 – 20	Radial to concrete pavement	Spill kit	Absorbs up to 30
Gasoline dispensing island	Vehicle gas tank overflow, fitting leak or failure, fuel transfer hose failure	1 – 2	Radial to concrete pavement	Spill kit	Absorbs up to 45
Kerosene dispensing	Portable container overflow, fitting leak or failure, fuel transfer hose failure	< 0.5	Radial to concrete pavement	Spill kit	Absorbs up to 30
Other Oil-Handling Areas or Oil-Filled Equipment (e.g. flow-through process vessels at an oil production facility)					
None					

^a Use one of the following methods of secondary containment or its equivalent: (1) Dikes, berms, or retaining walls sufficiently impervious to contain oil; (2) Curbing; (3) Culverting, gutters, or other drainage systems; (4) Weirs, booms, or other barriers; (5) Spill diversion ponds; (6) Retention ponds; or (7) Sorbent materials.

^b For storage tanks and bulk storage containers, the secondary containment capacity must be at least the capacity of the largest container plus additional capacity to contain rainfall or other precipitation.

^c For oil-filled operational equipment: Document in the table above if alternative measures to secondary containment (as described in §112.7(k)) are implemented at the facility.



3. Inspections, Testing, Recordkeeping and Personnel Training (§§112.7(e) and (f), 112.8(c)(6) and (d)(4), 112.9(c)(3), 112.12(c)(6) and (d)(4)):

Table G-5 Inspections, Testing, Recordkeeping and Personnel Training	
An inspection and/or testing program is implemented for all aboveground bulk storage containers and piping at this facility. [§§112.8(c)(6) and (d)(4), 112.9(c)(3), 112.12(c)(6) and (d)(4)]	<input checked="" type="checkbox"/>
<p>The following is a description of the inspection and/or testing program (e.g., reference to industry standard utilized, scope, frequency, method of inspection or test, and person conducting the inspection) for all aboveground bulk storage containers and piping at this facility:</p> <ol style="list-style-type: none"> 1) All employees are trained to do visual inspections of oil storage and transfer areas and equipment. An assigned knowledgeable employee does periodic visual inspections of the aboveground oil storage containers using Attachment 3.1 to document inspections; records of inspections consist of the monthly inspection checklist and the annual inspection checklist in the Steel Tank Institute (STI) SP001 inspection standard. Visual inspections of oil storage containers follow the inspection schedule in Attachment 3.2 of this plan. 2) The liquid level gauges on the waste oil AST, heating oil AST, and kerosene AST are inspected and calibrated at least annually following the manufacturer's procedures by a qualified technician. The heating oil AST's mechanical vent whistle is tested with each delivery of fuel oil; the kerosene AST's liquid level gauge-activated high-level alarm is inspected monthly and functionally tested annually following manufacturer's procedures by a qualified employee. Attachment 3.1 documents these inspections. 3) An assigned employee also visually inspects the dispensers on the kerosene AST and at the gasoline island for indications of deterioration and discharges, including the transfer hoses, valves, and other fittings, at least daily following the manufacturer's procedures. 4) Employees inspect the 1,500 gal waste oil tank concrete dike on a weekly basis for signs of deterioration, discharges (e.g., from tank leaking fittings or seams and transfer spills), or accumulation of oil. In addition, employees inspect the dike containment after any heavy rainfall. These inspections are documented in Attachment 3.1. The dike containment does not have a drain for storm water. Collected rain is pumped from the dike containment and discharged to the ground only after the inspection shows that there is no oil or oil sheen present in the rainwater collected in the dike. If oil or oil sheen is detected on rainwater in the dike, the oily rainwater is pumped into the 1,500-gal waste oil tank for disposal by the waste oil hauler contractor or the contractor is requested to remove the oily rainwater in the dike for disposal. Each drainage activity is recorded in Attachment 3.3. Record keeping for disposal of waste oil or oil-contaminated water accumulated in the berm area is in Attachment 3.3 of this plan. 5) If an employee encounters a spill during an inspection of the oil storage or transfer equipment, the employee will immediately take the necessary actions outlined in Table G-7. 6) An assigned employee inspects spill kits monthly to check equipment serviceability and ensure fully stocked kits. 	

Inspections, tests, and records are conducted in accordance with written procedures developed for the facility. Records of inspections and tests kept under usual and customary business practices will suffice for purposes of this paragraph. <i>[§112.7(e)]</i>	<input checked="" type="checkbox"/>
A record of the inspections and tests are kept at the facility or with the SPCC Plan for a period of three years. <i>[§112.7(e)]</i> [See Inspection Log and Schedule in Attachment 3.1]	<input checked="" type="checkbox"/>
Inspections and tests are signed by the appropriate supervisor or inspector. <i>[§112.7(e)]</i>	<input checked="" type="checkbox"/>
Personnel, training, and discharge prevention procedures <i>[§112.7(f)]</i>	
Oil-handling personnel are trained in the operation and maintenance of equipment to prevent discharges; discharge procedure protocols; applicable pollution control laws, rules, and regulations; general facility operations; and, the contents of the facility SPCC Plan. <i>[§112.7(f)]</i>	<input checked="" type="checkbox"/>
A person who reports to facility management is designated and accountable for discharge prevention. <i>[§112.7(f)]</i> Name/Title: <u>James Fixer / Head Mechanic</u>	<input checked="" type="checkbox"/>
Discharge prevention briefings are conducted for oil-handling personnel annually to assure adequate understanding of the SPCC Plan for that facility. Such briefings highlight and describe past reportable discharges or failures, malfunctioning components, and any recently developed precautionary measures. <i>[§112.7(f)]</i> [See Oil-handling Personnel Training and Briefing Log in Attachment 3.4]	<input checked="" type="checkbox"/>



4. Security (excluding oil production facilities) §112.7(g):

Table G-6 Implementation and Description of Security Measures	
Security measures are implemented at this facility to prevent unauthorized access to oil handling, processing, and storage area.	<input checked="" type="checkbox"/>
<p>The following is a description of how you secure and control access to the oil handling, processing and storage areas; secure master flow and drain valves; prevent unauthorized access to starter controls on oil pumps; secure out-of-service and loading/unloading connections of oil pipelines; address the appropriateness of security lighting to both prevent acts of vandalism and assist in the discovery of oil discharges:</p> <ol style="list-style-type: none">1) The facility is open for gasoline and kerosene sales 24 hours every day and is attended around the clock.2) All tank fill pipes are capped and locked when not in use; tanks do not have drain valves.3) The automotive maintenance shop is open for service for 10 hours, Monday through Saturday, and the shop is locked outside business hours.4) The dispenser pump controls are inside the gasoline sales and customer service area, attended 24 hours every day, in a locked utility room. The attendant can shut off pumps remotely from the attendant station in the sales and customer service area; the entrance to the attendant station is kept locked when the automotive maintenance shop is closed.5) The kerosene on-tank dispenser pump control is kept locked and only facility employees are authorized to unlock, turn the pump on, and transfer kerosene into customer containers.6) The gasoline dispensing island is lit and all facility entrances have security lights above and outside the entrances. There are also wall-mounted flood lamps that illuminate the 1,500-gal waste oil, heating oil, and kerosene AST locations.	



5. Emergency Procedures and Notifications (§112.7(a)(3)(iv) and 112.7(a)(5)):

Table G-7 Description of Emergency Procedures and Notifications

The following is a description of the immediate actions to be taken by facility personnel in the event of a discharge to navigable waters or adjoining shorelines [§112.7(a)(3)(iv) and 112.7(a)(5)]:

- 1) Shutdown pumping in event of a spill during any fuel transfer operation or an emergency at the fuel dispensers.
- 2) Eliminate potential sources of ignition such as open flames or sparks.
- 3) If possible, safe, and trained to do so, identify and secure source of the discharge and contain the discharge with sorbents, sandbags, or other material from the spill kits.
 - a. The main and largest spill kit is kept in the attendant area.
 - b. The second spill kit is kept behind the service shop.
 - c. The third spill kit is kept inside the service shop.
 - d. The fourth spill kit is kept between the 1,500-gal waste oil AST dike and the 500-gal kerosene AST.
- 4) Contact regulatory authorities and other response personnel and organizations (see next page).



6. Contact List (§112.7(a)(3)(vi)):

Table G-8 Contact List	
Contact Organization / Person	Telephone Number
National Response Center (NRC)	1-800-424-8802
Cleanup Contractor(s)	
RO Co. (Waste Oil Disposal Contractor)	717-888-8000
<i>Owners or operators of SPCC-regulated facilities are not required to have signed contracts or agreements with cleanup contractors under the SPCC rule. Although no formal written agreement to respond is required by the SPCC rule, the owner or operator must identify phone numbers for the facility response coordinator, National Response Center, cleanup contractors with whom you have an agreement for response, and all appropriate Federal, State, and local agencies who must be contacted in case of a discharge to navigable waters or adjoining shorelines.</i>	
Key Facility Personnel	
Designated Person Accountable for Discharge Prevention: James Fixer, Head Mechanic	Office: 717-888-7777 Emergency: 717-555-9190 (cell phone)
	Office: Emergency:
	Office: Emergency:
	Office: Emergency:
State Oil Pollution Control Agencies South Central Region PA Department of Environmental Protection (DEP)	877-333-1904 1-800-541-2050 (Backup)
Other State, Federal, and Local Agencies EPA Region III	Office: 215-814-5000 Emergency: 1-800-424-8802 (NRC)
York County Department of Emergency Services	911
Local Fire Department	911
Local Police Department	911
Hospital Malham General Hospital, 1700 Patient Blvd., Malham, PA 17402	717-888-0811
Other Contact References (e.g., downstream water intakes or neighboring facilities)	
Wayne Storey, Construction Tools and Lumber	717-888-6921 (Office)
Tonney Smart, Smart Auto Paint and Detailing	717-888-0055 (Office)



24th California Unified Program
Annual Training Conference
March 22, 23, 24, 29, 30, 31 - 2022

7. NRC Notification Procedure (§112.7(a)(4) and (a)(5)):

Table G-9 NRC Notification Procedure	
In the event of a discharge of oil to navigable waters or adjoining shorelines, the following information identified in Attachment 4 will be provided to the National Response Center immediately following identification of a discharge to navigable waters or adjoining shorelines [See Discharge Notification Form in Attachment 4]: <i>§112.7(a)(4)</i>	<input checked="" type="checkbox"/>
<ul style="list-style-type: none">• The exact address or location and phone number of the facility;• Date and time of the discharge;• Type of material discharged;• Estimate of the total quantity discharged;• Estimate of the quantity discharged to navigable waters;• Source of the discharge;	<ul style="list-style-type: none">• Description of all affected media;• Cause of the discharge;• Any damages or injuries caused by the discharge;• Actions being used to stop, remove, and mitigate the effects of the discharge;• Whether an evacuation may be needed; and• Names of individuals and/or organizations who have also been contacted.

8. SPCC Spill Reporting Requirements (Report within 60 days) (§112.4):

Submit information to the EPA Regional Administrator (RA) and the appropriate agency or agencies in charge of oil pollution control activities in the State in which the facility is located within 60 days from one of the following discharge events:

- A single discharge of more than 1,000 U.S. gallons of oil to navigable waters or adjoining shorelines or
- Two discharges to navigable waters or adjoining shorelines each more than 42 U.S. gallons of oil occurring within any twelve month period

You must submit the following information to the RA (Region VI)

- (1) Name of the facility;
- (2) Your name;
- (3) Location of the facility;
- (4) Maximum storage or handling capacity of the facility and normal daily throughput;
- (5) Corrective action and countermeasures you have taken, including a description of equipment repairs and replacements;
- (6) An adequate description of the facility, including maps, flow diagrams, and topographical maps, as necessary;
- (7) The cause of the reportable discharge, including a failure analysis of the system or subsystem in which the failure occurred;
- (8) Additional preventive measures you have taken or contemplated to minimize the possibility of recurrence; and
- (9) Such other information as the Regional Administrator may reasonably require pertinent to the Plan or discharge.

A. Onshore Facilities (excluding production) (§§112.8(b) through (d), 112.12(b) through (d)):

The owner or operator must meet the general rule requirements as well as requirements under this section. Note that not all provisions may be applicable to all owners/operators. For example, a facility may not maintain completely buried metallic storage tanks installed after January 10, 1974, and thus would not have to abide by requirements in §§112.8(c)(4) and 112.12(c)(4), listed below. In cases where a provision is not applicable, write "N/A".

Table G-10 General Rule Requirements for Onshore Facilities		N/A
Drainage from diked storage areas is restrained by valves to prevent a discharge into the drainage system or facility effluent treatment system, except where facility systems are designed to control such discharge. Diked areas may be emptied by pumps or ejectors that must be manually activated after inspecting the condition of the accumulation to ensure no oil will be discharged. [§§112.8(b)(1) and 112.12(b)(1)]	<input checked="" type="checkbox"/>	<input type="checkbox"/>
Valves of manual, open-and-closed design are used for the drainage of diked areas. [§§112.8(b)(2) and 112.12(b)(2)]	<input type="checkbox"/>	<input checked="" type="checkbox"/>
The containers at the facility are compatible with materials stored and conditions of storage such as pressure and temperature. [§§112.8(c)(1) and 112.12(c)(1)]	<input checked="" type="checkbox"/>	<input type="checkbox"/>
Secondary containment for the bulk storage containers (including mobile/portable oil storage containers) holds the capacity of the largest container plus additional capacity to contain precipitation. Mobile or portable oil storage containers are positioned to prevent a discharge as described in §112.1(b). [§112.6(a)(3)(ii)]	<input checked="" type="checkbox"/>	<input type="checkbox"/>
If uncontaminated rainwater from diked areas drains into a storm drain or open watercourse the following procedures will be implemented at the facility: [§§112.8(c)(3) and 112.12(c)(3)]		
<ul style="list-style-type: none"> • Bypass valve is normally sealed closed 	<input type="checkbox"/>	<input checked="" type="checkbox"/>
<ul style="list-style-type: none"> • Retained rainwater is inspected to ensure that its presence will not cause a discharge to navigable waters or adjoining shorelines 	<input checked="" type="checkbox"/>	<input type="checkbox"/>
<ul style="list-style-type: none"> • Bypass valve is opened and resealed under responsible supervision 	<input type="checkbox"/>	<input checked="" type="checkbox"/>
<ul style="list-style-type: none"> • Adequate records of drainage are kept [See Dike Drainage Log in Attachment 3.3] 	<input checked="" type="checkbox"/>	<input type="checkbox"/>
For completely buried metallic tanks installed on or after January 10, 1974 at this facility [§§112.8(c)(4) and 112.12(c)(4)]:		
<ul style="list-style-type: none"> • Tanks have corrosion protection with coatings or cathodic protection compatible with local soil conditions. 	<input type="checkbox"/>	<input checked="" type="checkbox"/>
<ul style="list-style-type: none"> • Regular leak testing is conducted. 	<input type="checkbox"/>	<input checked="" type="checkbox"/>
For partially buried or bunkered metallic tanks [§112.8(c)(5) and §112.12(c)(5)]:		
<ul style="list-style-type: none"> • Tanks have corrosion protection with coatings or cathodic protection compatible with local soil conditions. 	<input type="checkbox"/>	<input checked="" type="checkbox"/>
Each aboveground bulk container is tested or inspected for integrity on a regular schedule and whenever material repairs are made. Scope and frequency of the inspections and inspector qualifications are in accordance with industry standards. Container supports and foundations are regularly inspected. [See Inspection Log and Schedule and Bulk Storage Container Inspection Schedule in Attachments 3.1 and 3.2] [§112.8(c)(6) and §112.12(c)(6)(i)]	<input checked="" type="checkbox"/>	<input type="checkbox"/>
Outsides of bulk storage containers are frequently inspected for signs of deterioration, discharges, or accumulation of oil inside diked areas. [See Inspection Log and Schedule in Attachment 3.1] [§§112.8(c)(6) and 112.12(c)(6)]	<input checked="" type="checkbox"/>	<input type="checkbox"/>
For bulk storage containers that are subject to 21 CFR part 110 which are shop-fabricated, constructed of austenitic stainless steel, elevated and have no external insulation, formal visual inspection is conducted on a regular schedule. Appropriate qualifications for personnel performing tests and inspections are documented. [See Inspection Log and Schedule and Bulk Storage Container Inspection Schedule in Attachments 3.1 and 3.2] [§112.12(c)(6)(ii)]	<input type="checkbox"/>	<input checked="" type="checkbox"/>



Table G-10 General Rule Requirements for Onshore Facilities

		N/A
<p>Each container is provided with a system or documented procedure to prevent overfills for the container. Describe:</p> <p><u>Tank truck gasoline*, heating oil, and kerosene delivery procedures:</u></p> <ol style="list-style-type: none"> 1) Manually gauge receiving tank to confirm liquid level in tank and quantity to be delivered to prevent tank overflow; reconcile with inventory records and ATG, as applicable. Tanks will not be filled beyond 90% of their capacity. 2) Set parking brake and use chock blocks to prevent movement; inspect fittings and fueling hose for damage before starting fuel transfer operation. The fuel delivery person makes all hook-ups. 3) Place drip pans under valve-hose fitting connections. 4) The person responsible for monitoring the delivery will remain attentive and observe the entire fuel delivery, be prepared to stop the flow of fuel from the truck to the tank at any time, and respond to any unusual condition, leak, or spill which may occur during delivery. During heating oil and kerosene unloading, monitor the tank vent whistle on the heating oil tank and the liquid high-level alarm on the kerosene tank prior to initiating and during transfer. For delivery to the fuel oil tank, shutdown delivery if the vent whistle cannot be heard or the vent whistle stops sounding. For delivery to the kerosene tank, shutdown delivery when high-level alarm goes off. Secure all valves on tank truck before truck departure and inspect for leakage. 5) Following complete delivery, the fuel delivery person is responsible for disconnecting all hook-ups. 6) Record accurate readings for product and water in tank after fuel delivery, verify the amount of fuel received and make sure fill ports are properly secured. 7) If an oil spill occurs, the spill kit will be used to contain the spill. The main spill kit is located in the gasoline sales and customer service area. The maximum spill that would occur during an overflow while unloading gasoline is estimated at 20 gallons (a 4-inch truck fuel delivery hose, 30 feet in length, holds about 20 gallons). The maximum heating oil and kerosene unload rate is 25 gallons per minute (gpm) or 0.4 gallons per second (gps); the expected maximum amount to be spilled in an overflow incident during heating oil or kerosene unloading is about 3 gallons (0.4 gps x 8 seconds maximum to shutdown fuel transfer pump). <p><u>Gasoline dispenser customer fueling procedures:</u></p> <ol style="list-style-type: none"> 1) Before dispenser filling, shutoff engine and cell phone. 2) Do not top off tank after automatic shut-off. 3) If an oil spill occurs, the spill kit will be used to contain the spill. The maximum dispenser pumping rate is 10 gpm or less than 0.2 gps. In the event of a dispenser equipment failure such as a filling hose rupture or a vehicle fuel tank overflow, the expected maximum amount to be spilled is about 2 gallons (0.2 gps x 10 seconds maximum to shutdown dispenser fuel delivery pump). <p><u>Kerosene dispenser fuel transfers:</u></p> <ol style="list-style-type: none"> 1) Customers are prohibited from operating the kerosene dispenser, including transferring kerosene into their containers; employees will transfer kerosene into only authorized containers. 2) Do not top off container when filling; shutoff and lock the dispenser pump after completing transfer. 3) If an oil spill occurs, the spill kit will be used to contain the spill. The maximum dispenser pumping rate is 5 gpm or less than 0.1 gps. In the event of a dispenser equipment failure such as a filling hose rupture or a container overflow, the expected maximum amount to be spilled is less than 0.5 gallon (0.1 gps x 5 seconds maximum to shutdown dispenser fuel delivery pump). <p><u>Transfers into waste oil AST:</u> Gauge AST (manually or via visual gauge) to confirm liquid level in tank to prevent tank overflow.</p> <p><u>Transfers into waste oil tote:</u> Transfer all waste oil into the tote fill port using a funnel. If an oil spill occurs, the spill kit in the shop will be used to contain the spill.</p> <p><u>Transfers into oil dispensing system drums:</u> Confirm liquid level in drum glass sight gauge before transferring oil product into drum from supplier's tote and monitor sight gauge during filling to prevent drum overflow; a drum will not be filled beyond 55 gallons. The maximum transfer rate of the supplier's pump is 7.5 gpm or 0.1 gps. In the event of an overflow incident during the transfer, the expected maximum amount to be spilled is 0.5 gallons (0.1 gps maximum transfer rate x 5 seconds maximum to shutdown transfer pump).</p>	<input checked="" type="checkbox"/>	<input type="checkbox"/>



Plan/Template Body - End

Liquid level sensing devices are regularly tested to ensure proper operation [See Inspection Log and Schedule in Attachment 3.1]. <i>[§112.6(a)(3)(iii)]</i>	<input checked="" type="checkbox"/>	<input type="checkbox"/>
Visible discharges which result in a loss of oil from the container, including but not limited to seams, gaskets, piping, pumps, valves, rivets, and bolts are promptly corrected and oil in diked areas is promptly removed. <i>[§§112.8(c)(10) and 112.12(c)(10)]</i>	<input checked="" type="checkbox"/>	<input type="checkbox"/>
Aboveground valves, piping, and appurtenances such as flange joints, expansion joints, valve glands and bodies, catch pans, pipeline supports, locking of valves, and metal surfaces are inspected regularly. [See Inspection Log and Schedule in Attachment 3.1] <i>[§§112.8(d)(4) and 112.12(d)(4)]</i>	<input checked="" type="checkbox"/>	<input type="checkbox"/>
Integrity and leak testing are conducted on buried piping at the time of installation, modification, construction, relocation, or replacement. [See Inspection Log and Schedule in Attachment 3.1] <i>[§§112.8(d)(4) and 112.12(d)(4)]</i>	<input type="checkbox"/>	<input checked="" type="checkbox"/>



Plan/Template Attachments

ATTACHMENT 1 – Five Year Review and Technical Amendment Logs

ATTACHMENT 1.1 – Five Year Review Log

By signing below, I am certifying that I have completed a review and evaluation of the SPCC Plan for this facility, and will/will not amend this Plan as a result.

An owner or operator must review and evaluate the SPCC Plan at least once every five years from the signature date of the Plan. A review of the Plan must also be completed whenever there is a change in the facility which affects the potential for a discharge of oil. In addition, the owner or operator has to amend the Plan within six months of review to include more effective prevention and control technology if the technology has been field-proven at the time of the review and will significantly reduce the likelihood of a discharge to navigable waters or adjoining shorelines. The owner or operator must implement any Plan amendment resulting from the review as soon as possible, but no longer than six months after the amendment.

Table G-13 Review and Evaluation of SPCC Plan for Facility			
Review Date	Plan Amendment		Name and signature of person authorized to review this Plan
	Will Amend	Will Not Amend	
	<input type="checkbox"/>	<input type="checkbox"/>	
	<input type="checkbox"/>	<input type="checkbox"/>	
	<input type="checkbox"/>	<input type="checkbox"/>	



ATTACHMENT 1.2 – Technical Amendment Log

Any technical amendments to this Plan will be re-certified in accordance with Section I of this Plan template.

Table G-15 Description and Certification of Technical Amendments

Review Date	Description of Technical Amendment	Name and signature of person certifying this technical amendment



ATTACHMENT 2 – Oil Spill Contingency Plan and Checklist;

An oil spill contingency plan and written commitment of resources is required for:

- Flowlines and intra-facility gathering lines at oil production facilities; and
- Qualified oil-filled operational equipment which has no secondary containment. **NOT APPLICABLE**

The SPCC Guidance for Regional Inspectors, EPA 550-B-05-001 provides further details on the use of the oil spill contingency plan to meet specific regulatory requirements and options.

An oil spill contingency plan meeting the provisions of 40 CFR part 109, as described below, and a written commitment of manpower, equipment and materials required to expeditiously control and remove any quantity of oil discharged that may be harmful is attached to this Plan.	<input type="checkbox"/>
--	--------------------------

Complete the checklist below to verify that the necessary operations outlined in 40 CFR part 109 - Criteria for State, Local and Regional Oil Removal Contingency Plans - have been included.

Table G-15 Checklist of Development and Implementation Criteria for State, Local and Regional Oil Removal Contingency Plans (§109.5)^a

- | | |
|---|--|
| (a) Definition of the authorities, responsibilities and duties of all persons, organizations or agencies which are to be involved in planning or directing oil removal operations. | <input type="checkbox"/> |
| (b) Establishment of notification procedures for the purpose of early detection and timely notification of an oil discharge including: <ul style="list-style-type: none"> (1) The identification of critical water use areas to facilitate the reporting of and response to oil discharges. (2) A current list of names, telephone numbers and addresses of the responsible persons (with alternates) and organizations to be notified when an oil discharge is discovered. | <input type="checkbox"/>
<input type="checkbox"/> |



ATTACHMENT 3 – Inspections, Dike Drainage and Personnel Training Logs

ATTACHMENT 3.1 – Inspection Log and Schedule

Table G-16 Inspection Log and Schedule

This log is intended to document compliance with §§112.6(a)(3)(iii), 112.8(c)(6), 112.8(d)(4), 112.9(b)(2), 112.9(c)(3), 112.9(d)(1), 112.9(d)(4), 112.12.(c)(6), and 112.12(d)(4), as applicable.

Date of Inspection	Container / Piping / Equipment	Describe Scope (or cite Industry Standard)	Observations	Name/ Signature of Inspector	Records maintained separately ^a
	<u>ASTs</u> <ul style="list-style-type: none"> • 1,500-gal. waste oil tank #1 • 275-gal. heating oil tank #2 • 500-gal. kerosene tank #3 • 65-gal. drums #1 to #12 	Monthly and annual visual inspections as all containers meet Category 1 criteria (STI SP001, Standard for the Inspection of Aboveground Storage Tanks)			<input type="checkbox"/>
	Secondary containment dike	Weekly visual inspections and after heavy rainfall			<input type="checkbox"/>
	Liquid level gauges and high-level alarms	Gauges- Annual inspections and calibration following manufacturer's procedures Vent whistle- test with each delivery and at least annual inspections following manufacturer's procedures High-level alarm- monthly inspections and annual functional test following manufacturer's procedures			<input type="checkbox"/>
	Dispensers	Daily visual inspections of the dispenser sumps, fill nozzles, hoses, and fittings (manufacturer instructions)			<input type="checkbox"/>
	Spill kits	Monthly visual inspections and equipment/supply inventory			<input type="checkbox"/>

^a Indicate in the table above if records of facility inspections are maintained separately at this facility.

ATTACHMENT 3.2 – Bulk Storage Container Inspection Schedule – onshore facilities (excluding production):

To comply with integrity inspection requirement for bulk storage containers, inspect/test each shop-built aboveground bulk storage container on a regular schedule in accordance with a recognized container inspection standard based on the minimum requirements in the following table.

Table G-17 Bulk Storage Container Inspection Schedule	
Container Size and Design Specification	Inspection requirement
Portable containers (including drums, totes, and intermodal bulk containers (IBC)):	Visually inspect monthly for signs of deterioration, discharges or accumulation of oil inside containment pallets.
55 to 1,100 gallons with sized secondary containment: 65-gal. steel lube and other oil product drums #1 to #12 275-gal. heating oil AST #2 500-gal. kerosene AST #3	Visually inspect monthly for signs of deterioration, discharges or accumulation of oil inside bermed area plus any annual inspection elements per industry inspection standards
1,101 to 5,000 gallons with sized secondary containment and a means of leak detection ^a : 1,500-gal. waste oil AST #1	
1,101 to 5,000 gallons with sized secondary containment and no method of leak detection ^a :	Visually inspect monthly for signs of deterioration, discharges or accumulation of oil inside diked areas, plus any annual inspection elements and other specific integrity tests that may be required per industry inspection standards

^a Examples of leak detection include, but are not limited to, double-walled tanks and elevated containers where a leak can be visually identified.



ATTACHMENT 3.3 – Dike Drainage Log

Table G-18 Dike Drainage Log						
Date	Bypass valve sealed closed	Rainwater inspected to be sure no oil (or sheen) is visible	Open bypass valve and reseal it following drainage	Drainage activity supervised	Observations	Signature of Inspector
	<input type="checkbox"/>	<input type="checkbox"/>	<input type="checkbox"/>	<input type="checkbox"/>		
	<input type="checkbox"/>	<input type="checkbox"/>	<input type="checkbox"/>	<input type="checkbox"/>		
	<input type="checkbox"/>	<input type="checkbox"/>	<input type="checkbox"/>	<input type="checkbox"/>		



ATTACHMENT 3.4 – Oil-handling Personnel Training and Briefing Log

Table G-19 Oil-Handling Personnel Training and Briefing Log

Date	Description / Scope	Attendees



In the event of a discharge of oil to navigable waters or adjoining shorelines, the following information will be provided to the National Response Center [also see the notification information provided in Section 7 of the Plan]:

Table G-20 Information provided to the National Response Center in the Event of a Discharge			
Discharge/Discovery Date		Time	
Facility Name			
Facility Location (Address/Lat-Long/Section Township Range)			
Name of reporting individual		Telephone #	
Type of material discharged		Estimated total quantity discharged	Gallons/Barrels
Source of the discharge		Media affected	<input type="checkbox"/> Soil
			<input type="checkbox"/> Water (specify)
			<input type="checkbox"/> Other (specify)
Actions taken			
Damage or injuries	<input type="checkbox"/> No <input type="checkbox"/> Yes (specify)	Evacuation needed?	<input type="checkbox"/> No <input type="checkbox"/> Yes (specify)
Organizations and individuals contacted	<input type="checkbox"/> National Response Center 800-424-8802 Time		
	<input type="checkbox"/> Cleanup contractor (Specify) Time		
	<input type="checkbox"/> Facility personnel (Specify) Time		
	<input type="checkbox"/> State Agency (Specify) Time		
	<input type="checkbox"/> Other (Specify) Time		



That's the end of the template for the Tier I Plan,
with the Gas and Care Express example.

Now on to the Secondary Containment calculation
worksheet example for that facility.





Spill Prevention Control and Countermeasure (SPCC) Plan Single Horizontal Cylindrical Tank inside a rectangular or square dike or berm Gas and Care Express **EXAMPLE**

This worksheet calculates the secondary containment volume of a rectangular or square dike or berm for a single horizontal cylindrical tank. In this example, there are no other objects or structures within the dike or berm that will displace the volume of the secondary containment.

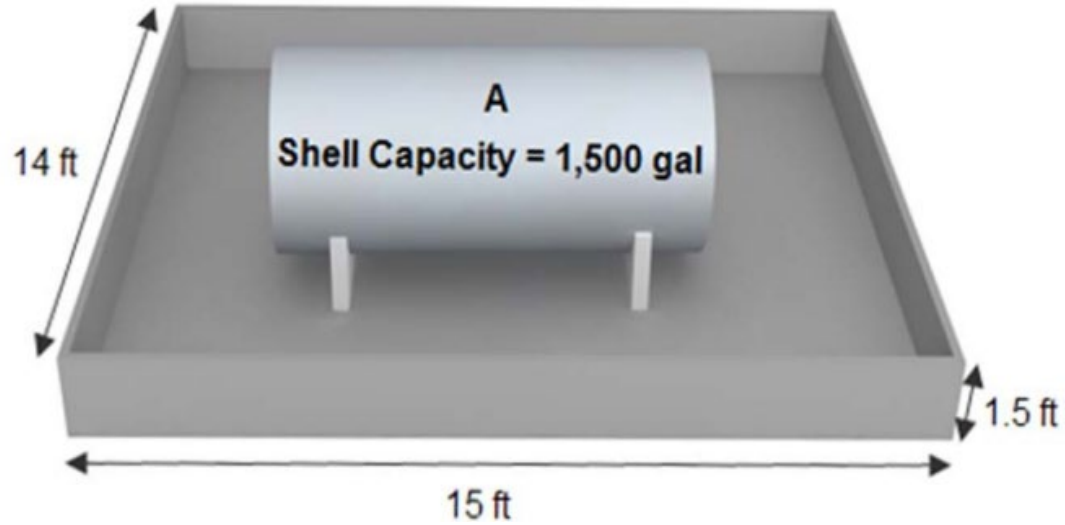
Steps:

1. Determine the volume of the secondary containment, V_{SC}
- 2a. Determine the volume of the tank when the tank shell capacity is unknown, V_{Tank}
- 2b. Determine the volume of the tank when shell capacity is known, V_{Tank}
3. Determine the percentage of the secondary containment volume, V_{SC} to the tank volume, V_{Tank}
4. Determine whether the secondary containment can contain the entire tank shell capacity with additional capacity to contain rain.

Information needed to use this worksheet:

- Tank shell capacity
In this example, the tank is 1,500 gallons.
- Secondary containment length, width, and height
See diagram for dimensions.
- Rainfall amount
Rainfall can collect in the secondary containment; the selected rain event for the location is 5.6 inches.





Disclaimer: Please note that these are simplified calculations for qualified facilities that assume: 1) the secondary containment is designed with a flat, level floor; 2) the wall height is equal for all four walls; and 3) the corners of the secondary containment system are 90 degrees. Additionally, the calculations do not include displacement for support structures or foundations.

1. Determine the volume of the secondary containment, V_{SC}

$$\text{Secondary Containment Area, } A_{SC} = \frac{15}{\text{Length (ft)}} \times \frac{14}{\text{Width (ft)}}$$

$$= \frac{210}{b} \text{ ft}^2$$

$$V_{SC} (\text{ft}^3) = \frac{210}{b} \text{ (ft}^2) \times \frac{1.5}{\text{Height (ft)}} = \frac{315}{c} \text{ ft}^3$$

To convert the secondary containment volume from cubic feet to gallons for the template, then:

$$V_{SC} (\text{gallons}) = \frac{315}{c} \text{ (ft}^3) \times \frac{7.48}{(\text{ft}^3/\text{gal})} = \frac{2,356}{c} \text{ gal}$$

2a. Determine the volume of the tank when the tank shell capacity is unknown, V_{Tank}

N/A for this example because we know the volume of the tank

$$\text{Tank radius (ft)} = \frac{\text{Diameter (ft)}}{2} = \text{ft}$$

$$V_{Tank} (\text{ft}^3) = 3.14 \times \left(\frac{\text{Radius}^2 (\text{ft}^2)}{\text{Radius}^2 (\text{ft}^2)} \right) \times \text{Tank Height (ft)} = \text{d} \text{ ft}^3$$

2b. Determine the volume of the tank when shell capacity is known, V_{Tank}

a is the tank shell capacity from page 1

$$V_{Tank} (\text{ft}^3) = \frac{1,500}{a \text{ (gal)}} \times 0.1337 \text{ ft}^3/\text{gal} = \frac{200.5}{e} \text{ ft}^3$$

3. Determine the percentage of the secondary containment volume, V_{SC} to the tank volume, V_{Tank}^1 (to determine whether the volume of the containment is sufficient to contain the tank's entire shell capacity).

$V_{SC}/V_{Tank} = \frac{315}{200.5} = 1.57$

c is the secondary containment volume
d / e is the tank volume calculated in Step 2 of this worksheet

$\% = \frac{1.57}{f} \times 100 = 157$

f
g

Percentage, **g**, is 157% which is greater than 100%. The capacity of the secondary containment is sufficient to contain the shell capacity of the tank. However, we must also account for rain that can collect in the dike or berm. See Step 4.



4. Determine whether the secondary containment can contain the entire tank shell capacity with additional capacity to contain rain.

If rain can collect in a dike or berm, the SPC rule requires that secondary containment for bulk storage containers have additional capacity to contain rainfall or freeboard. The rule does not specify a method to determine the additional capacity required to contain rain or the size of the rain event for designing secondary containment. However, industry practice often considers a rule of thumb of 110% of the tank capacity to account for rainfall. A dike with a 110% capacity of the tank may be acceptable depending on the shell size of the tank, local precipitation patterns, and frequency of containment inspections. In a different geographic area, a dike or berm designed to hold 110% for the same size tank may not have enough additional containment capacity to account for a typical rain event in that area. The 110% standard may also not suffice for larger storm events. If you want to determine a conservative capacity for a rain event, you may want to consider a 24-hour 25-year storm event. It is the responsibility of the owner or operator² to determine the additional containment capacity necessary to contain rain. A typical rain event may exceed the amount determined by using a 110% "rule of thumb" so it is important to consider the amount of a typical rain event when designing or assessing your secondary containment capacity.

Rainfall data may be available from various sources such as local water authorities, local airports, and the National Oceanic and Atmospheric Administration (NOAA).



Selected Rainfall Event:

$$24\text{---} \text{Hr } 25\text{---} \text{Yr Rainfall (in)} = \frac{5.6}{h} \text{ in}$$

$$\text{Rainfall (ft)} = \frac{5.6}{h \text{ (in)}} + \frac{12}{\text{in/ft}}$$

$$\frac{0.5}{i} \text{ ft}$$

$$\text{Volume of Rain to be Contained, } V_{\text{Rain}} \text{ (ft}^3\text{)} = \frac{0.5}{i \text{ (ft)}} \times \frac{210}{b \text{ (ft}^2\text{)}} = \frac{105}{j} \text{ ft}^3$$

b is the area of secondary containment calculated in Step 1 of this worksheet

$$\text{Total Containment Capacity Required (ft}^3\text{)} = \frac{105}{j \text{ (ft}^3\text{)}} + \frac{200.5}{d \text{ or } e \text{ (ft}^3\text{)}}$$

d / e is the tank volume calculated in Step 2 of this worksheet

$$\frac{305.5}{k} \text{ ft}^3$$

The volume of the secondary containment in **c** is 315 ft³, which is greater than the required containment capacity in **k** (305.5ft³). Therefore, the secondary containment is sufficient to contain the shell capacity of the tank and has sufficient additional capacity to contain a typical rainfall amount.





Any Questions?

reich.peter@epa.gov

415-972-3052

witul.janice@epa.gov

415-972-3089

U.S. EPA Region 9, San Francisco

Superfund and Oil Information Center:
(800) 424-9346 or TDD (800) 553-7672

