



**California Conference
of Directors of
Environmental Health**



WILDFIRE/DISASTER AFTER ACTION ROUNDTABLE MEETING

August 27-28, 2018
Embassy Suites Hotel
100 Capital Mall, Sacramento, CA 95814

EVENT/FIRE SUMMARY INFORMATION

County/City: MARIPOSA COUNTY

Name of Event/Fire: DETWILER FIRE

Dates of Event/Fire: July 16, 2017 – November 2018

Date EH/HM Work Began

Phase I (HM/HW Removal): July 27, 2017

Phase II (Debris Removal): Aug 8, 2017

Acres Burned: 81,826 acres

Structures Destroyed: 63 residences, 67 other structures and 1 Church destroyed.

Structures Damaged: 13 residences damaged and 8 other structures damaged

Number Evacuated: 5,000+

Number of Fatalities: ZERO

Description or Additional Information: _____

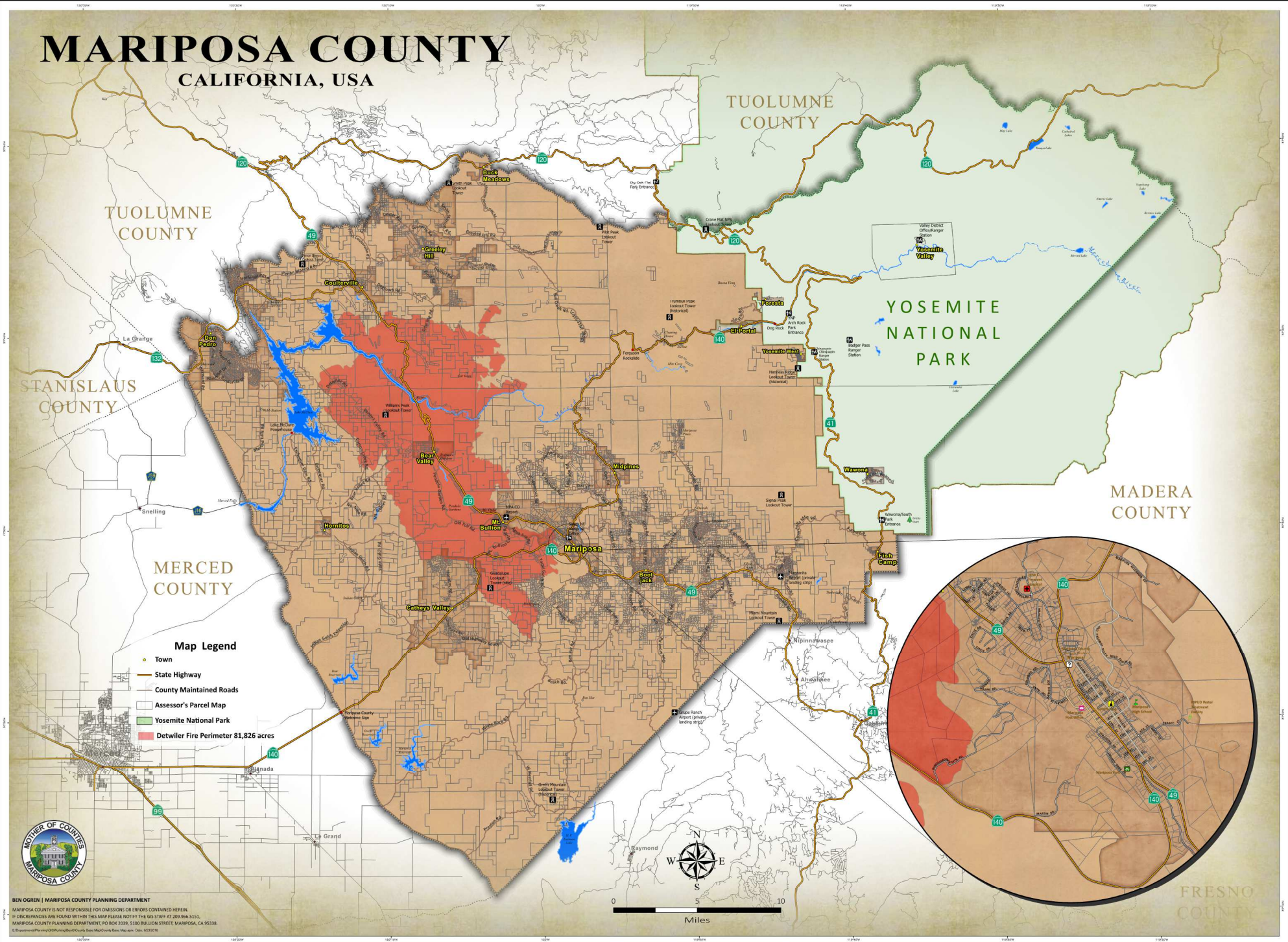
Please attach map of impacted area

**WILDFIRE/DISASTER AFTER ACTION ROUNDTABLE
PANEL TOPICS MARIPOSA COUNTY (DETWILER FIRE)**

#	Topic	Description	Mariposa County Actions
1	Situational Awareness	How did you find out about what was necessary? How did you evaluate and determine that external resources would be needed? How did you determine how to request resources? What did you end up doing?	Most of the time I was in the EOC working directly with OES. As soon as we were notified that we had lost homes in the fire I initiated a request for assistance from DTSC and CalRecycle through OES. Using existing staff EH conducted a field survey of all known structure losses and posted property with hazard notices. Based on field reports plans were made to conduct additional surveys with CalRecycle and DTSC staff. OES set up a DROC and we/they cleaned up the debris.
2	Putting Staff in Field	Challenges with PPE; outside assistance; dangers; what to bring; what is provided.	Existing staff were used to conduct initial surveys from outside the debris zone. After that CalRecycle, DTSC and their contractors did the heavy lifting.
4	Right of Entry	Process used, challenges, what was done if not obtained, outreach to public, how were all residents accounted for?	We had 84 homes/structures lost in the Detwiler Fire. We received 82 ROE's the other two were cleaned up by homeowners. Our SO has an amazing evacuation plan that they executed flawlessly.
8	State/federal Coordination	Concerns, issues, feedback?	CalFire IMT 4 does not play well with others.
11	Community Interactions	Was this done, when, how...?	We held community meetings and participated in fire information meetings. We provided info on food safety, water safety and clean-up at meetings prior to re-population of evacuated areas. We created information flyers and distributed those at various locations.

MARIPOSA COUNTY

CALIFORNIA, USA



Map Legend

- Town
- State Highway
- County Maintained Roads
- Assessor's Parcel Map
- Yosemite National Park
- Detwiler Fire Perimeter 81,826 acres



BEN OGDEN | MARIPOSA COUNTY PLANNING DEPARTMENT
 MARIPOSA COUNTY IS NOT RESPONSIBLE FOR OMISSIONS OR ERRORS CONTAINED HEREIN.
 IF DISCREPANCIES ARE FOUND WITHIN THIS MAP PLEASE NOTIFY THE GIS STAFF AT 209.966.5151.
 MARIPOSA COUNTY PLANNING DEPARTMENT, P.O. BOX 2039, 1300 BULLOCK STREET, MARIPOSA, CA 95338
 © 2018 Mariposa County Planning Department. All rights reserved. Date: 03/20/18



FRESNO COUNTY